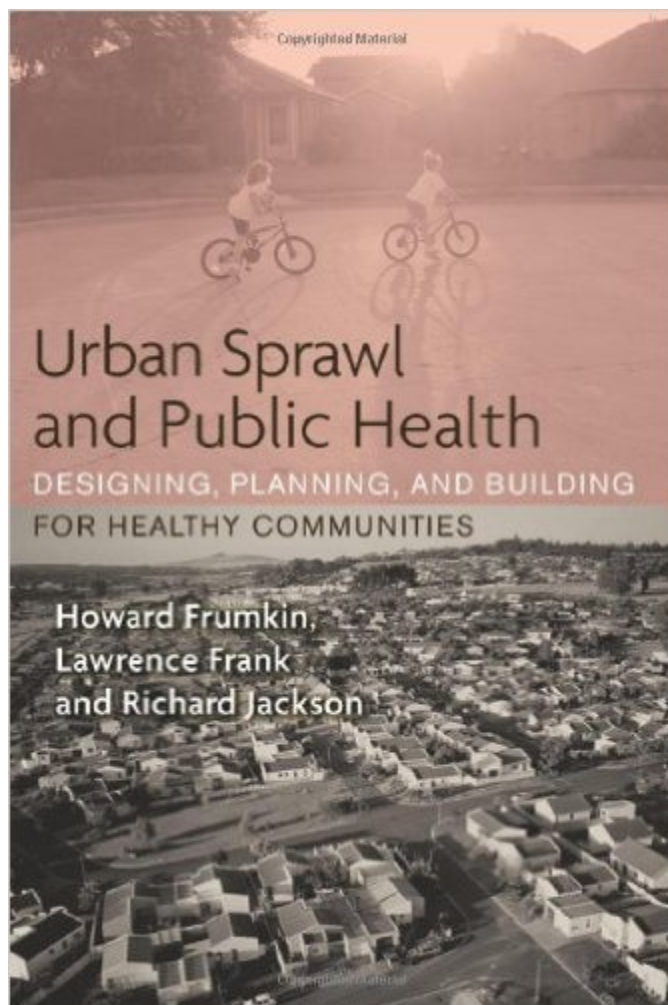


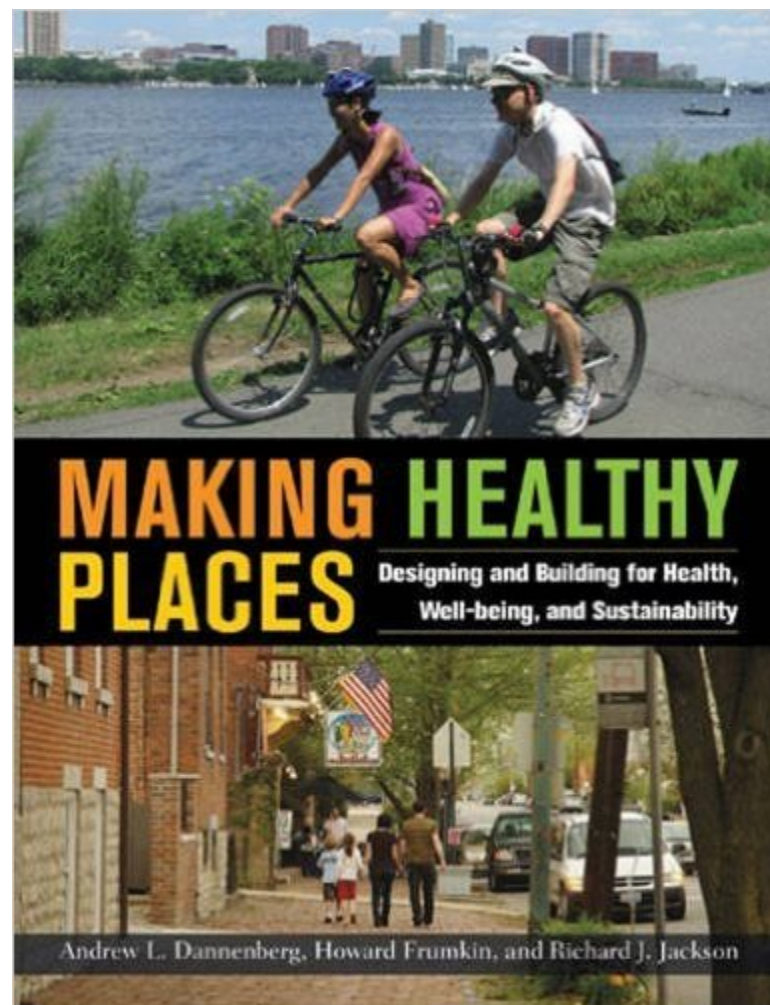
BUILDING HEALTHIER COMMUNITIES

Jana Lynott, AICP
Senior Strategic Policy Advisor
AARP Public Policy Institute
www.aarp.org/livablepolicy
 @JanaLynott

 @AARPpolicy, #LivIndex
www.aarp.org/livabilityindex



Island Press, 2004



Island Press, 2011


SURGEON GENERAL'S CALL TO ACTION ON WALKING AND WALKABLE COMMUNITIES

SEPTEMBER 2015



Step it up! Help make your community more walkable. Learn how by visiting
www.SurgeonGeneral.gov

WHAT IS THE LIVABILITY INDEX: GREAT NEIGHBORHOODS FOR ALL AGES

AARP The Magazine | AARP Bulletin | In Your State | AARP Foundation | Discounts | More ▾ | [f](#) [t](#) [v](#) | Rewards for Good | [Register](#) | [Log In](#) 

AARP
Real Possibilities

Public Policy Institute
Inquiry. Analysis. Solutions.

PUBLICATIONS | ISSUES | INITIATIVES | EXPERTS | EVENTS | DATA | ABOUT PPI | [MORE FROM AARP ▾](#)

[AARP Home](#) » [AARP Public Policy Ins...](#) »

Livability Index | Great Neighborhoods for All Ages

LIVABILITY DEFINED | FEATURED COMMUNITIES | ABOUT US [f](#) [t](#) [v](#)

personal safety | quality of health care | access to destinations

How livable is your community?

enter your address, city, state or zip code

air quality | water quality | housing affordability

[LEARN MORE](#)

The Livability Index scores cities and communities across the U.S. for the services and amenities that impact your life the most.

Search for your city or learn more about how we define livability.

HEALTH

Healthy Behaviors
Access to Health Care
Quality of Health Care
Commitment to Livability

ENGAGEMENT

Internet Access
Civic Engagement
Social Engagement
Equal Rights
Commitment to Livability

ENVIRONMENT

Water Quality
Air Quality
Resilience
Energy Efficiency
Commitment to Livability

OPPORTUNITY

Equal Opportunity
Economic Opportunity
Education
Multi-generational
Communities
Local Fiscal Health
Commitment to Livability

↑
Explore the Score



HOUSING

Housing Accessibility
Housing Options
Housing Affordability
Commitment to Livability

TRANSPORTATION

Convenient Transportation Options
Transportation Costs
Safe Streets
Accessible System Design
Commitment to Livability

NEIGHBORHOOD

Proximity to Destinations
Mixed-use
Neighborhoods
Compact Neighborhoods
Personal Safety
Neighborhood Quality
Commitment to Livability

Location Results

Current Location: 41 Cherry St, [Burlington, Chittenden County, VT, 05401](#)

RECENT LOCATIONS: [Burlington, VT](#) × | [601 E St NW, Washington, DC 20004](#) × | [5944 Wilson Blvd, Arlington, VA 22205](#) ×

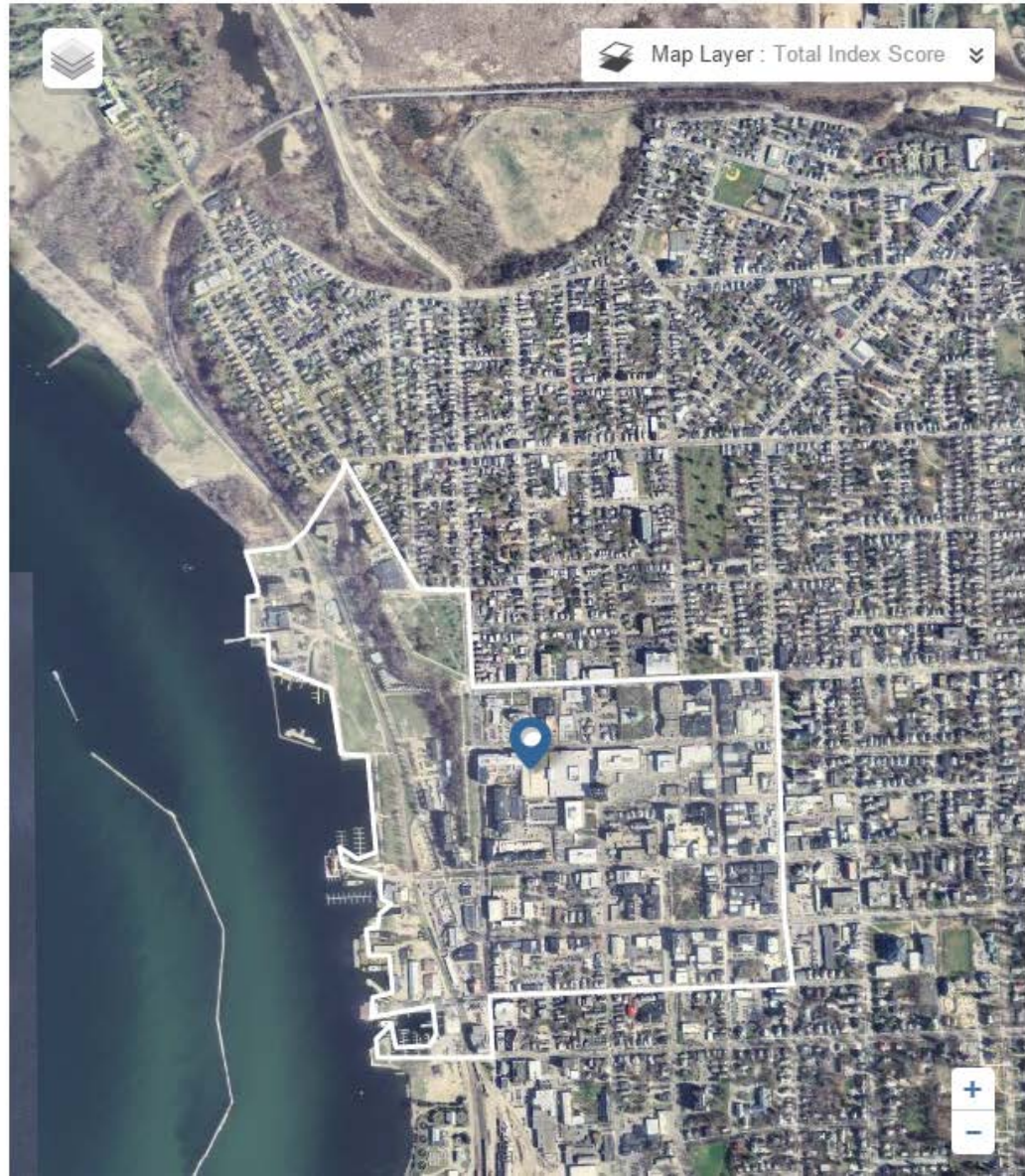
Livability Score ?



CUSTOMIZE THIS SCORE

CATEGORY SCORE

- 71** HOUSING
Affordability and access >
- 62** NEIGHBORHOOD
Access to life, work, and play >
- 69** TRANSPORTATION
Safe and convenient options >
- 66** ENVIRONMENT
Clean air and water >
- 72** HEALTH
Prevention, access, and quality >
- 77** ENGAGEMENT
Civic and social involvement >
- 66** OPPORTUNITY
Inclusion and possibilities >





[CUSTOMIZE THIS SCORE](#)

CATEGORY SCORE

- 

54

HOUSING
Affordability and access


- 

76

NEIGHBORHOOD
Access to life, work, and play


- 

82

TRANSPORTATION
Safe and convenient options


- 

46

ENVIRONMENT
Clean air and water


- 

69

HEALTH
Prevention, access, and quality


- 

81

ENGAGEMENT
Civic and social involvement


- 

23

OPPORTUNITY
Inclusion and possibilities





HEALTH

Prevention, access, and quality



Community conditions influence health behaviors. Healthy communities have comprehensive smoke-free air laws, offer easy access to exercise opportunities, and have high-quality health care available. Because health is so deeply related to quality of life, many other categories of livability in this Index include metrics related to health. For example, access to healthy foods, jobs and education, number of walk trips, lower speed limits, social engagement measures, and air and water pollution are all related to health. Where you live matters.

Metrics Policies Resources

How does my community compare to neighborhoods across the country?

● TOP THIRD
 ● MIDDLE THIRD
 ● BOTTOM THIRD

+	Healthy behaviors TOBACCO USE	19.6% of people smoke regularly <small>Median US neighborhood: 20.3%</small>
+	Healthy behaviors OBESITY PREVALENCE	21.8% of people are obese <small>Median US neighborhood: 27.8%</small>
+	Healthy behaviors ACCESS TO EXERCISE OPPORTUNITIES	100.0% of people have access <small>Median US neighborhood: 83.2%</small>
+	Access to health care HEALTH CARE PROFESSIONAL SHORTAGE AREAS	0 index from 0 to 25 <small>Median US neighborhood: 0</small>
+	Quality of health care PREVENTABLE HOSPITALIZATION RATE	51.1 preventable hospitalizations per 1,000 patients <small>Median US neighborhood: 62.1</small>
+	Quality of health care PATIENT SATISFACTION	51.9% of patients are satisfied <small>Median US neighborhood: 67.3%</small>

Location Results

Current Location: 41 Cherry St, [Burlington, Chittenden County, VT, 05401](#)

RECENT LOCATIONS: [Burlington, VT](#) x | [601 E St NW, Washington, DC 20004](#) x | [5944 Wilson Blvd, Arlington, VA 22205](#) x

TRANSPORTATION

Livability Score ?



[CUSTOMIZE THIS SCORE](#)

CATEGORY SCORE

- 71** HOUSING
Affordability and access >
- 62** NEIGHBORHOOD
Access to life, work, and play >
- 69** TRANSPORTATION
Safe and convenient options
- 66** ENVIRONMENT
Clean air and water >
- 72** HEALTH
Prevention, access, and quality >
- 77** ENGAGEMENT
Civic and social involvement >
- 66** OPPORTUNITY
Inclusion and possibilities >



TRANSPORTATION

Safe and convenient options

How easily and safely we're able to get from one place to another has a major effect on our quality of life. Livable communities provide their residents with transportation options that connect people to social activities, economic opportunities, and medical care, and offer convenient, healthy, accessible, and low-cost alternatives to driving.

[Metrics](#) [Policies](#) [Resources](#)

How does my community compare to neighborhoods across the country?

● TOP THIRD ● MIDDLE THIRD ● BOTTOM THIRD

+ Convenient transportation options FREQUENCY OF LOCAL TRANSIT SERVICE	0 buses and trains per hour ● Median US neighborhood: 0
+ Convenient transportation options WALK TRIPS	1.11 trips per household per day ● Median US neighborhood: 0.73
+ Convenient transportation options CONGESTION	14.2 hours per person per year ● Median US neighborhood: 17.4
+ Transportation costs HOUSEHOLD TRANSPORTATION COSTS	\$8,941 per year ● Median US neighborhood: \$10,791
+ Safe streets SPEED LIMITS	25.9 miles per hour ● Median US neighborhood: 28.0
+ Safe streets CRASH RATES	4.0 fatal crashes per 100,000 people per year ● Median US neighborhood: 7.6
+ Accessible system design ADA-ACCESSIBLE STATIONS AND VEHICLES	91.3% of stations and vehicles are accessible ● Median US neighborhood: 81.7%

Livability Score ?



CUSTOMIZE THIS SCORE

CATEGORY SCORE

- 58** HOUSING
Affordability and access
- 60** NEIGHBORHOOD
Access to life, work, and play
- 47** TRANSPORTATION
Safe and convenient options
- 67** ENVIRONMENT
Clean air and water
- 63** HEALTH
Prevention, access, and quality
- 78** ENGAGEMENT
Civic and social involvement
- 55** OPPORTUNITY
Inclusion and possibilities

NEIGHBORHOOD

NEIGHBORHOOD

Access to life, work, and play

What makes a neighborhood truly livable? Two important qualities are access and convenience. Compact neighborhoods make it easier for residents to reach the things they need most, from jobs to grocery stores to libraries. Nearby parks and places to buy healthy food help people make smart choices, and diverse, walkable neighborhoods with shops, restaurants, and movie theatres make local life interesting. Additionally, neighborhoods served by good access to more distant destinations via transit or automobile help residents connect to jobs, health care, and services throughout the greater community.

Metrics Policies Resources

How does my community compare to neighborhoods across the country?

● TOP THIRD ● MIDDLE THIRD ● BOTTOM THIRD

+ Proximity to destinations ACCESS TO GROCERY STORES AND FARMERS' MARKETS	4.0 stores and markets Median US neighborhood: 0.0
+ Proximity to destinations ACCESS TO PARKS	0.0 parks Median US neighborhood: 0.0
+ Proximity to destinations ACCESS TO LIBRARIES	1.0 libraries Median US neighborhood: 0.0
+ Proximity to destinations ACCESS TO JOBS BY TRANSIT	0 jobs Median US neighborhood: 0
+ Proximity to destinations ACCESS TO JOBS BY AUTO	11,865 jobs Median US neighborhood: 55,312
+ Mixed-use neighborhoods DIVERSITY OF DESTINATIONS	0.86 index from 0 to 1 Median US neighborhood: 0.81
+ Compact neighborhoods ACTIVITY DENSITY	5,364 jobs and people per sq. mi. Median US neighborhood: 3,567
+ Personal safety CRIME RATE	260 crimes per 10,000 people Median US neighborhood: 304
+ Neighborhood quality VACANCY RATE	1.6% of units are vacant Median US neighborhood: 8.8%



CUSTOMIZE THIS SCORE

CATEGORY SCORE

- 71

HOUSING

Affordability and access

>
- 62

NEIGHBORHOOD

Access to life, work, and play

>
- 69

TRANSPORTATION

Safe and convenient options

>
- 66

ENVIRONMENT

Clean air and water

>
- 72

HEALTH

Prevention, access, and quality

>
- 77

ENGAGEMENT

Civic and social involvement

>
- 66

OPPORTUNITY

Inclusion and possibilities

>

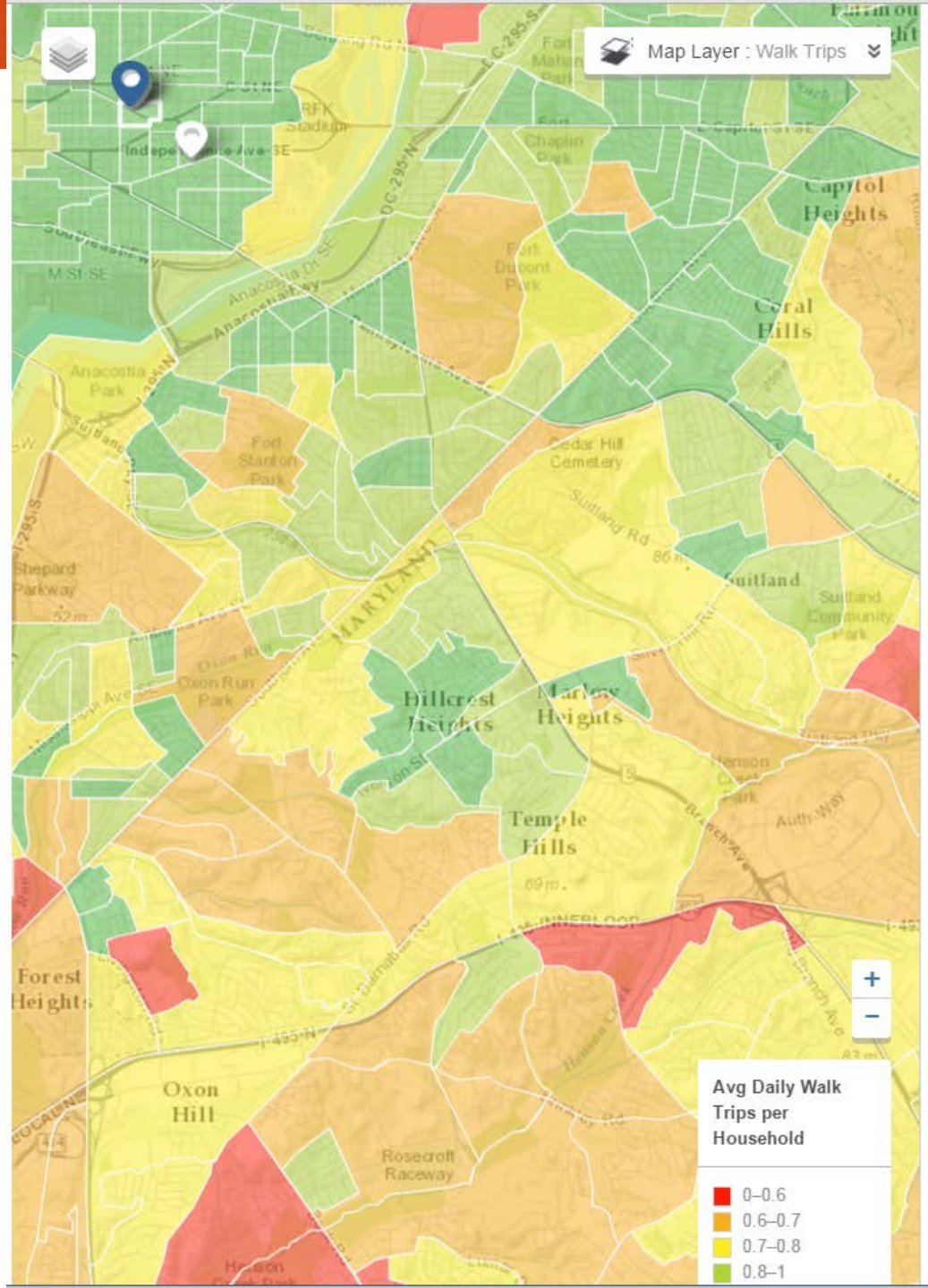
Map Layer : Total Index Score v

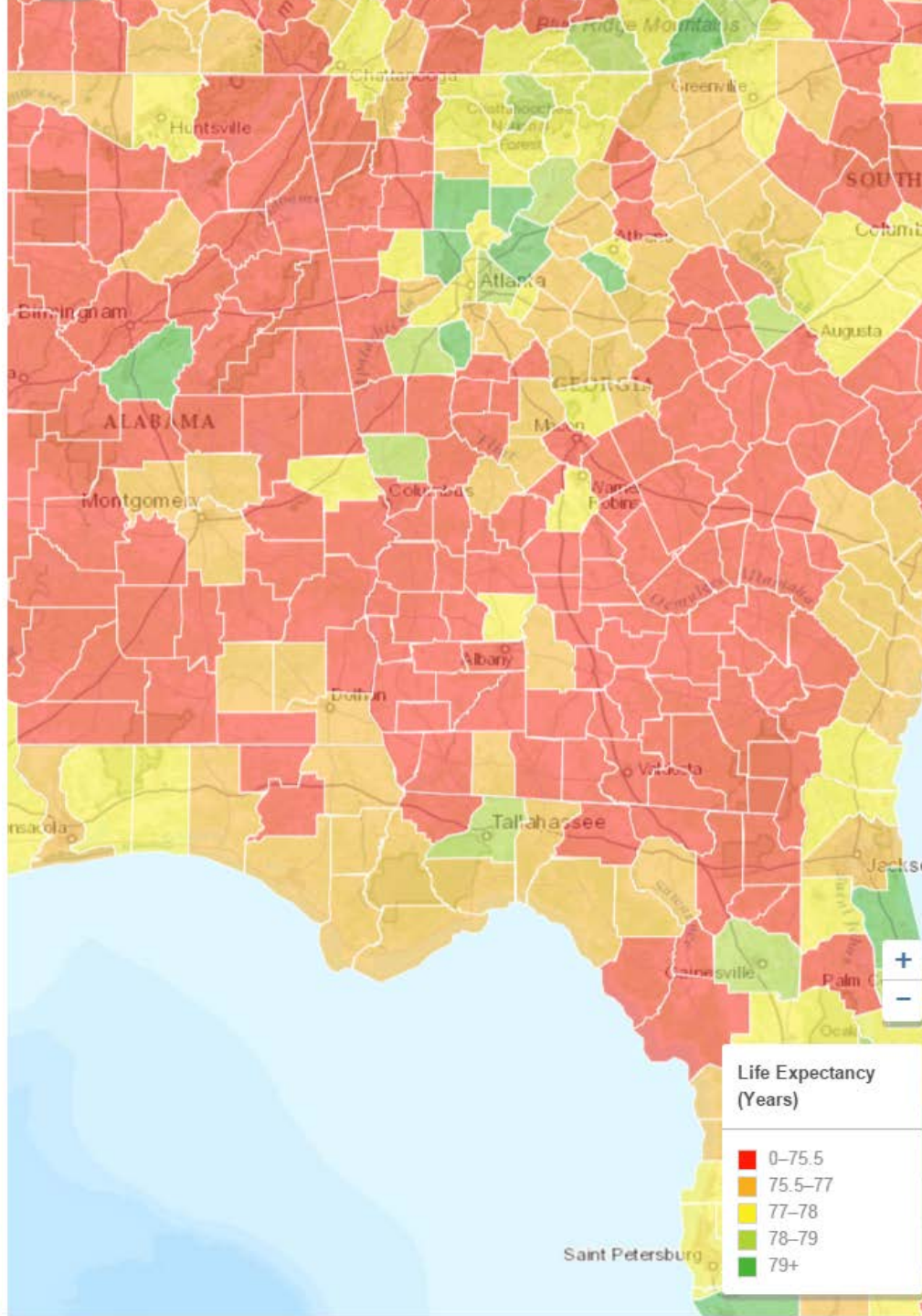
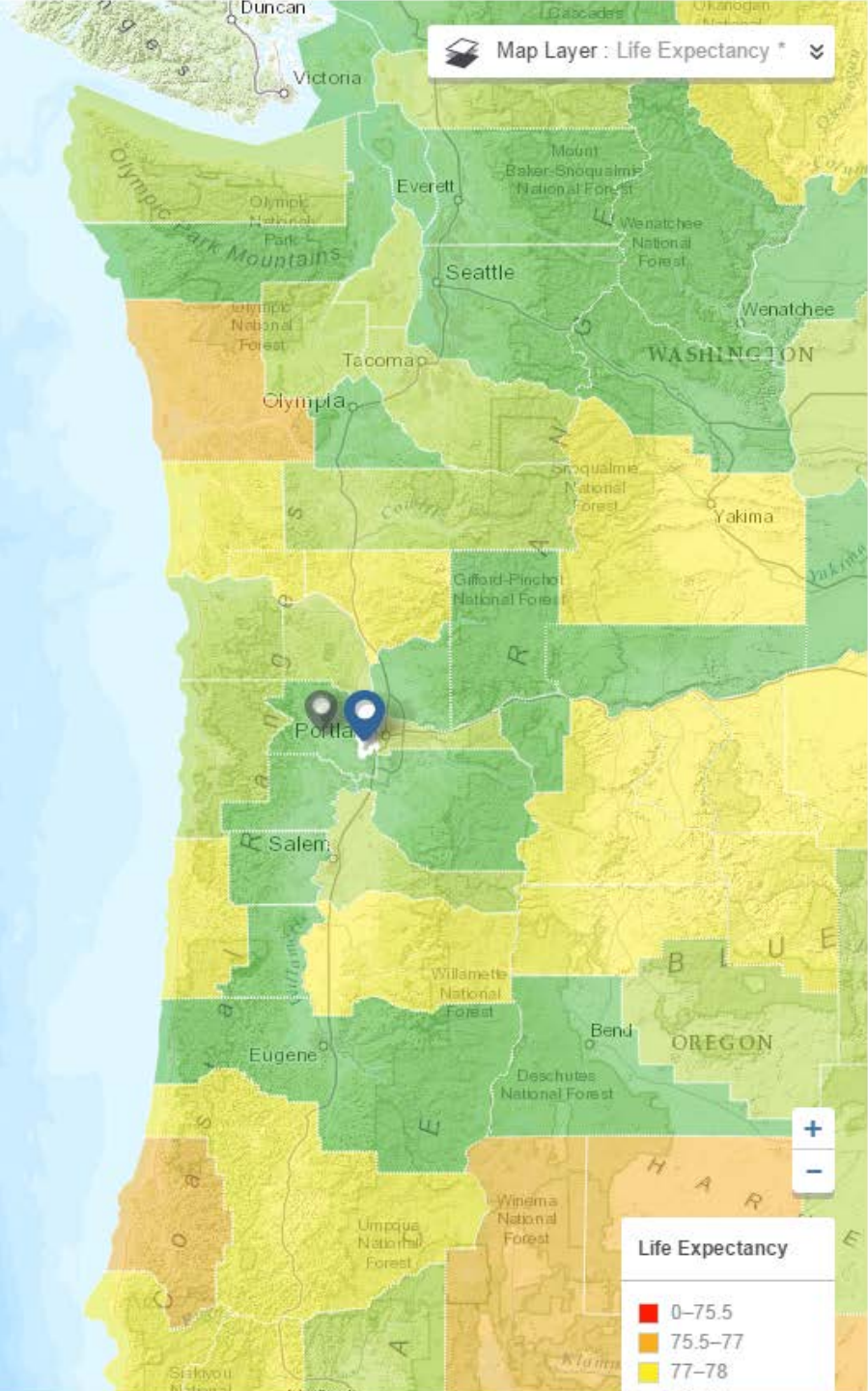
POPULATION CHARACTERISTICS	ENVIRONMENT
Total Score CLEAR	Environment Score APPLY
Total Population * APPLY	Regional Air Pollution APPLY
% African American * APPLY	Water Pollution APPLY
% Asian * APPLY	
% Hispanic * APPLY	HEALTH
% Age 50+ * APPLY	Health Score APPLY
% Age 65+ * APPLY	Smoking Rates APPLY
	Obesity Rates APPLY
HOUSING	Access to Exercise Opportunities APPLY
Housing Score APPLY	Health Professional Shortage Areas APPLY
Housing Options APPLY	Life Expectancy (Years) * APPLY
Housing Costs APPLY	
Housing Cost Burden APPLY	ENGAGEMENT
	Engagement Score APPLY
NEIGHBORHOOD	Voting Rates APPLY
Neighborhood Score APPLY	Volunteer Rates APPLY
Access to Healthy Foods APPLY	Broadband Cost and Speed APPLY
Access to Parks APPLY	
Transit Access APPLY	OPPORTUNITY
Crime Rates APPLY	Opportunity Score APPLY
	Median Income * APPLY
TRANSPORTATION	Upward Mobility * APPLY
Transportation Score APPLY	Age Diversity APPLY
Walk Trips APPLY	High School Graduation Rates APPLY
Transportation Costs APPLY	
Fatal Crashes APPLY	
% Households w/out a Vehicle * APPLY	

Select from the dropdown list to see additional datapoints on the map. Note that small sample sizes may lead to inaccurate data estimates for some block groups.

*Items noted with an asterisk do not contribute to the score

WALK TRIPS





OTHER INDICATORS RELATED TO HEALTH IN THE LIVABILITY INDEX

Housing

- Affordable housing
- Accessible housing

Transportation

- Availability and accessibility of public transit
- Walk trips
- Speed limits
- Crash rates

Neighborhood

- Access to healthy food
- Access to parks
- Transit / auto accessibility
- Live, work, play neighborhoods

Environment

- Air and water quality
- Disaster preparedness/resilience

Engagement

- Social involvement
- Access to broadband

Opportunity

- Income inequality
- Educational attainment
- Jobs/worker

FOR MORE INFORMATION

The Livability Index

www.aarp.org/livabilityindex

#LivIndex

Livable Communities Research and Policy Solutions

www.aarp.org/livablepolicy

@AARPpolicy

Livable Communities Outreach

www.aarp.org/livable

@LivableCmnty