

# Framework and Measures to Build a Culture of Health

Alonzo L. Plough, PhD, MPH  
Chief Science Officer and  
Vice President Research-Evaluation-Learning

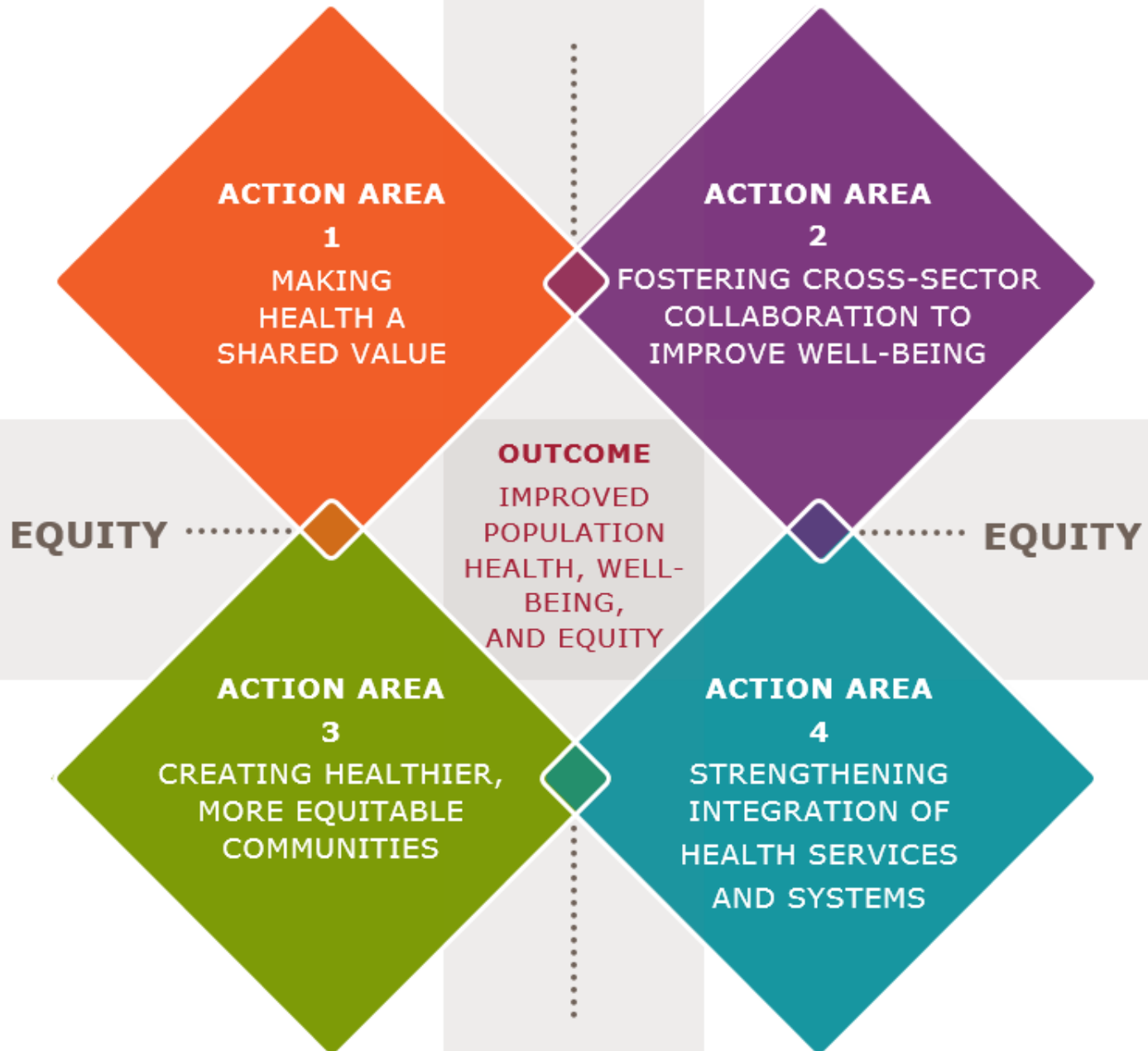


Robert Wood Johnson Foundation

**What is  
holding our  
nation back?**



# CULTURE OF HEALTH ACTION FRAMEWORK



# Selecting National Measures

CULTURE OF HEALTH ACTION FRAMEWORK		
ACTION AREAS	DRIVERS	MEASURES
1 MAKING HEALTH A SHARED VALUE	MINDSET AND EXPECTATIONS	Value on health interdependence Value on well-being Public discussion on health promotion and well-being Sense of community
	SENSE OF COMMUNITY	Social support Voter participation Volunteer engagement
	CIVIC ENGAGEMENT	Local health department collaboration
2 FOSTERING CROSS-SECTOR COLLABORATION TO IMPROVE WELL-BEING	NUMBER AND QUALITY OF PARTNERSHIPS	Local health department collaboration U.S. corporate giving Federal allocations for health investments related to nutrition and indoor and outdoor physical activity
	INVESTMENT IN CROSS-SECTOR COLLABORATION	Climate adaptation and mitigation Health in all policies (support for working families)
	POLICIES THAT SUPPORT COLLABORATION	Young people's civic participation
	BUILT ENVIRONMENT/PHYSIC CONDITIONS	Residential segregation Early childhood education Public libraries Air quality
3 CREATING HEALTHIER, MORE EQUITABLE COMMUNITIES	SOCIAL AND ECONOMIC ENVIRONMENT	Access to public health Access to stable health insurance Maternal and child health services Population covered by an Accountable Care Organization Electronic medical record linkages Chronic medical record linkages Social spending relative to health expenditure
	POLICY AND GOVERNANCE	
	ACCESS TO SERVICES	
4 STRENGTHENING INTEGRATION OF HEALTH SERVICES AND SYSTEMS	CONSUMER EXPERIENCE AND QUALITY	
	BALANCE AND INTEGRATION	
	CONSUMER EXPERIENCE AND QUALITY	
OUTCOME	OUTCOME AREAS	MEASURES
IMPROVED POPULATION HEALTH, WELL-BEING, AND EQUITY	ENHANCED INDIVIDUAL AND COMMUNITY WELL-BEING	Well-being rating Caregiving burden Adverse child experiences
	MANAGED CHRONIC DISEASE AND REDUCED TOXIC STRESS	Disability associated with chronic conditions Family health care cost Potentially preventable hospitalization rates
	REDUCED HEALTH CARE COSTS	Annual end-of-life care expenditures

## Criteria for 41 measures

- Availability of national data
- Application to entire lifespan & 'healthspan'
- Broad determinants and upstream drivers
- Appeal to multiple audiences
- Equitable



ACTION AREA



# MAKING HEALTH A SHARED VALUE

DRIVERS

MINDSET AND  
EXPECTATIONS

SENSE OF  
COMMUNITY

CIVIC  
ENGAGEMENT

ACTION AREA



# MAKING HEALTH A SHARED VALUE

**MEASURE:**  
Voter participation.

ACTION AREA



# MAKING HEALTH A SHARED VALUE

**MEASURE:**  
Value on well-being.



ACTION AREA



# FOSTERING CROSS-SECTOR COLLABORATION TO IMPROVE WELL-BEING

DRIVERS

NUMBER  
AND QUALITY  
OF PARTNERSHIPS

INVESTMENT IN  
CROSS-SECTOR  
COLLABORATION

POLICIES  
THAT SUPPORT  
COLLABORATION

ACTION AREA



# FOSTERING CROSS-SECTOR COLLABORATION TO IMPROVE WELL-BEING

**MEASURE:**  
Community policing.

ACTION AREA



## FOSTERING CROSS-SECTOR COLLABORATION TO IMPROVE WELL-BEING

### **MEASURE:**

Business support for workplace health promotion.

ACTION AREA



# CREATING HEALTHIER, MORE EQUITABLE COMMUNITIES

DRIVERS

BUILT  
ENVIRONMENT/  
PHYSICAL  
CONDITIONS

SOCIAL AND  
ECONOMIC  
ENVIRONMENT

POLICY AND  
GOVERNANCE

ACTION AREA



# CREATING HEALTHIER, MORE EQUITABLE COMMUNITIES

**MEASURE:**  
Residential segregation.



ACTION AREA



# CREATING HEALTHIER, MORE EQUITABLE COMMUNITIES

**MEASURE:**  
Early childhood education.

ACTION AREA



# STRENGTHENING INTEGRATION OF HEALTH SERVICES AND SYSTEMS

DRIVERS

ACCESS

CONSUMER  
EXPERIENCE  
AND QUALITY

BALANCE AND  
INTEGRATION

ACTION AREA



# STRENGTHENING INTEGRATION OF HEALTH SERVICES AND SYSTEMS

## **MEASURE:**

Practice laws for nurse practitioners.



ACTION AREA



# STRENGTHENING INTEGRATION OF HEALTH SERVICES AND SYSTEMS

**MEASURE:**  
Hospital partnerships.



OUTCOME

# IMPROVED POPULATION HEALTH, WELL-BEING, AND EQUITY

## OUTCOME AREAS

ENHANCED  
INDIVIDUAL AND  
COMMUNITY  
WELL-BEING

MANAGED  
CHRONIC DISEASE  
AND REDUCED  
TOXIC STRESS

REDUCED  
HEALTH CARE  
COSTS



IMPROVED  
POPULATION  
HEALTH,  
WELL-BEING,  
AND EQUITY

OUTCOME AREAS

**MEASURE:**

Potentially preventable hospitalization rates.



IMPROVED  
POPULATION  
HEALTH,  
WELL-BEING,  
AND EQUITY

OUTCOME AREAS



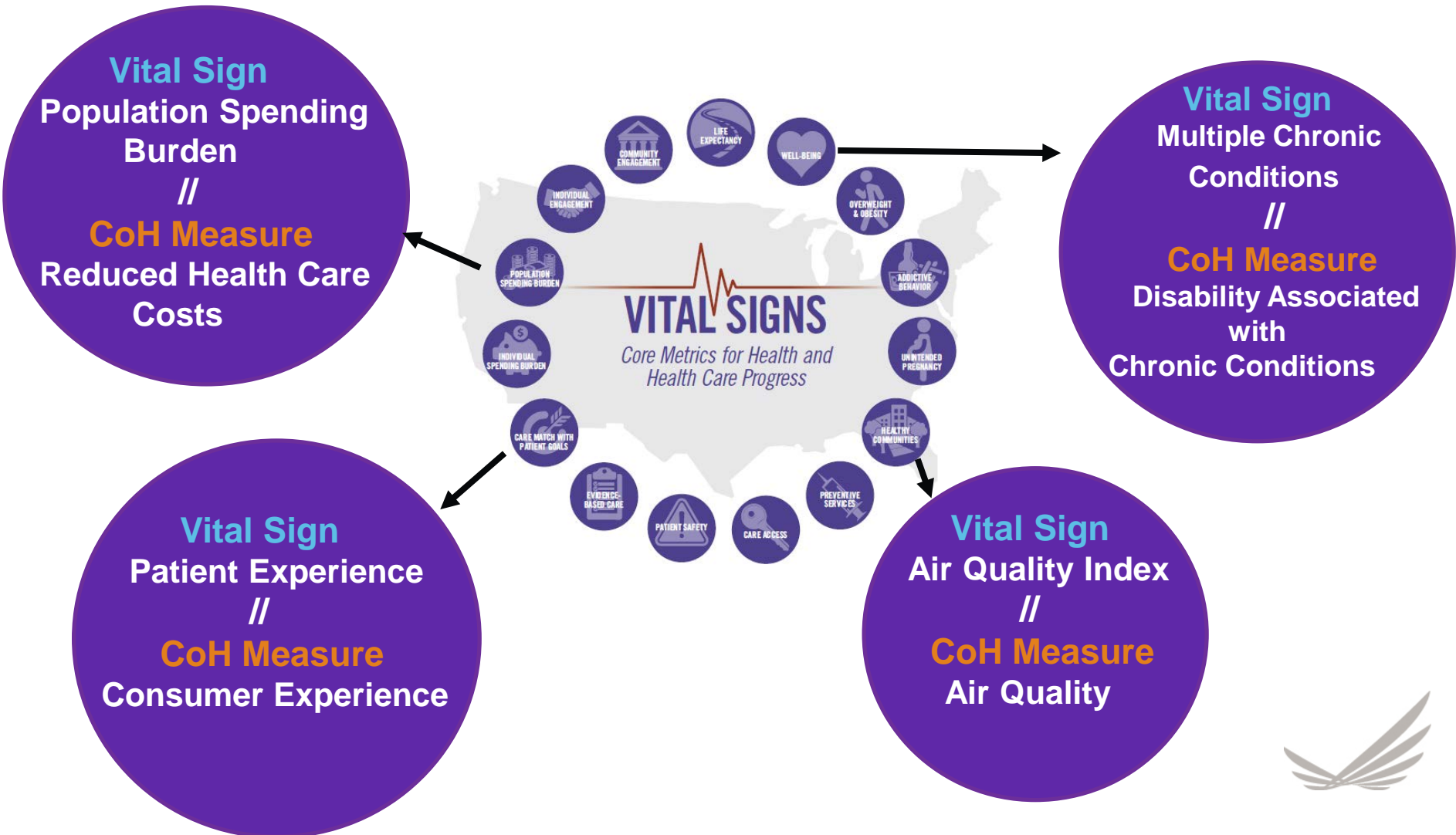
**MEASURE:**  
Caregiving burden.



# Sentinel Communities

- Opportunity to understand CoH at the local level and identify new measures using sentinel surveillance
- Mixed methods of data collection and monitoring
- About 30 communities varied by geography, sociodemographics, and innovations in health
- Will not affect opportunities for Foundation funding

# Institute of Medicine Vital Signs // Culture of Health Measures



# Culture of Health Measures // CDC National Prevention Strategy

Culture of Health Measures	National Prevention Strategy
Action-oriented	Empowering people
Fostering cross-sector collaboration	Promoting cross sector collaboration
Creating healthier communities	Creating healthy & safe communities
Creating more equitable communities	Eliminating health disparities
Strengthening the integration of services and systems	Integrating clinical and community preventive services

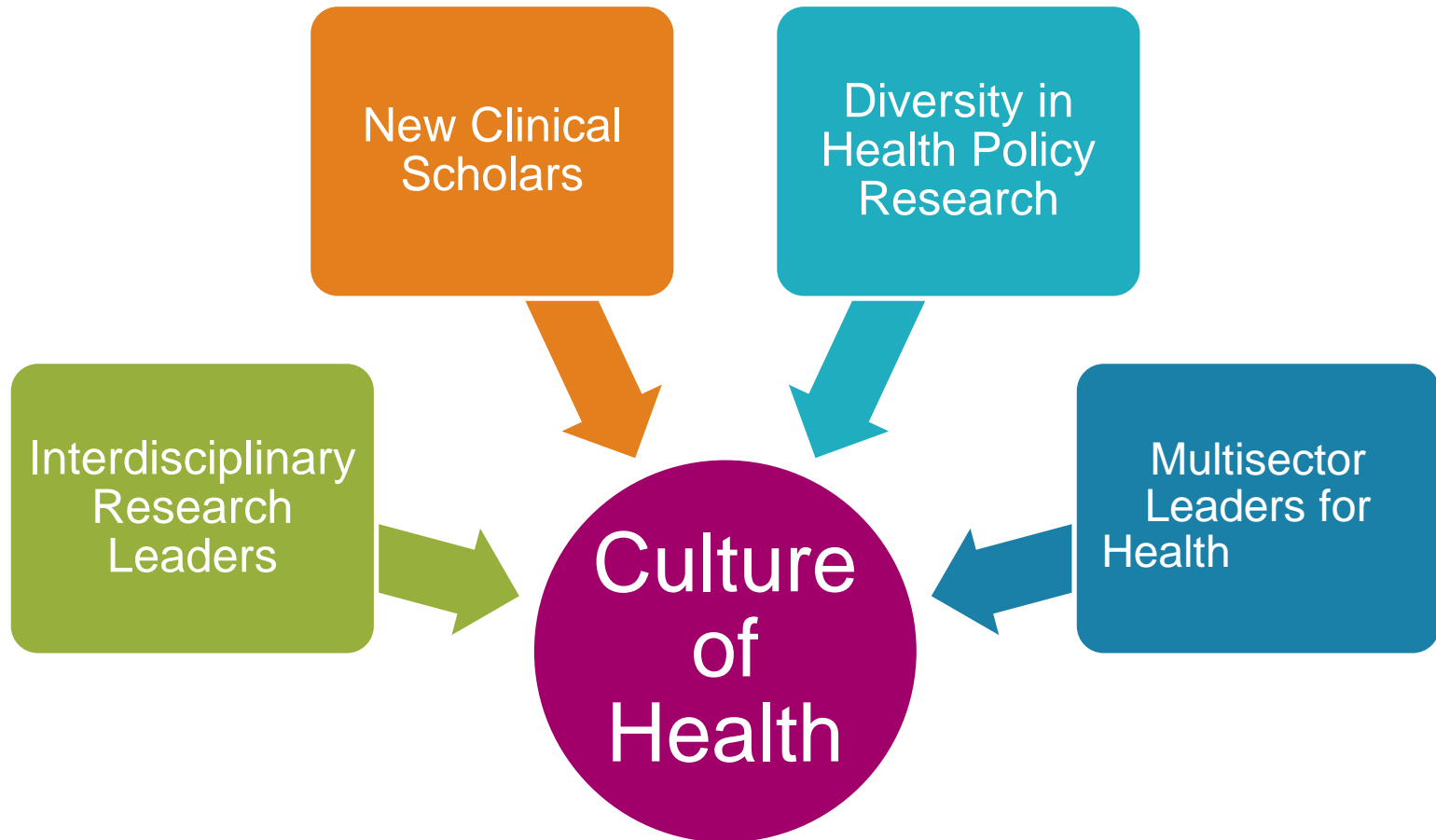


# A Framework for Other Social Movements





# Advancing Change Leadership

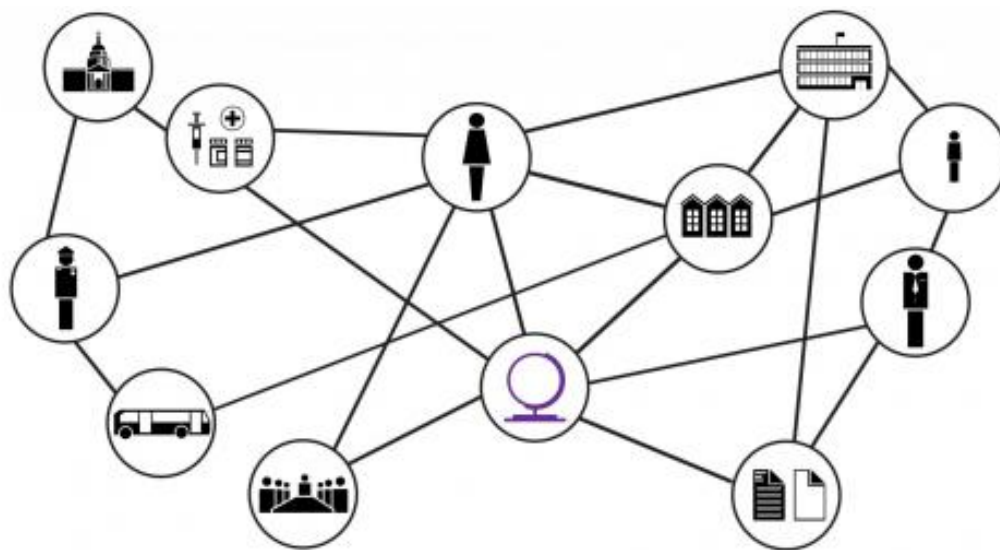




Evidence for Action

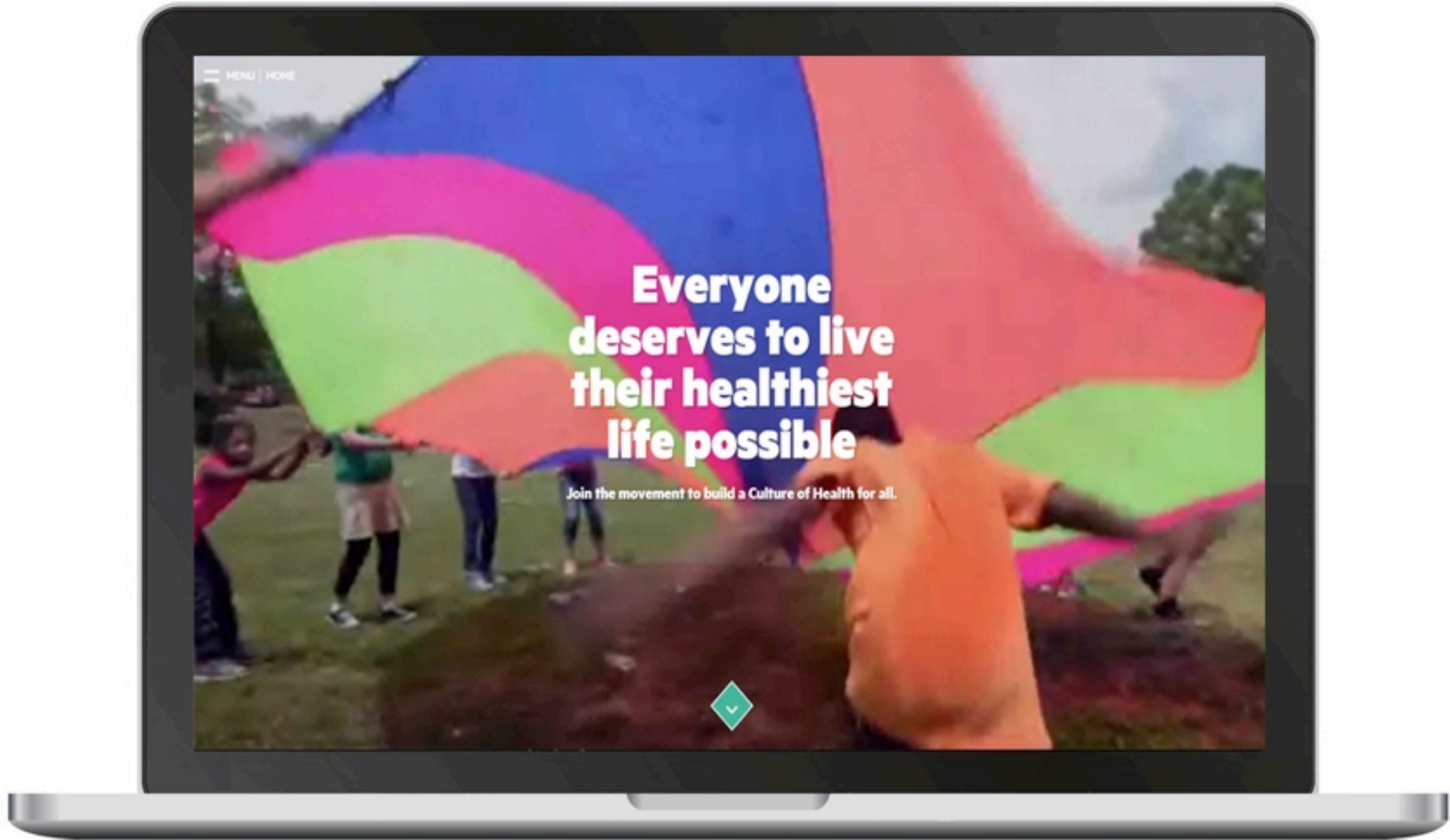


Policies for Action



Systems for Action

[RWJF.ORG/FUNDING ALERT](https://www.rwjf.org/funding-alert)



[Culture of Health.ORG](https://www.cultureofhealth.org)

**Thank you!**