

Nursing as Integral Part of Building a Culture of Health

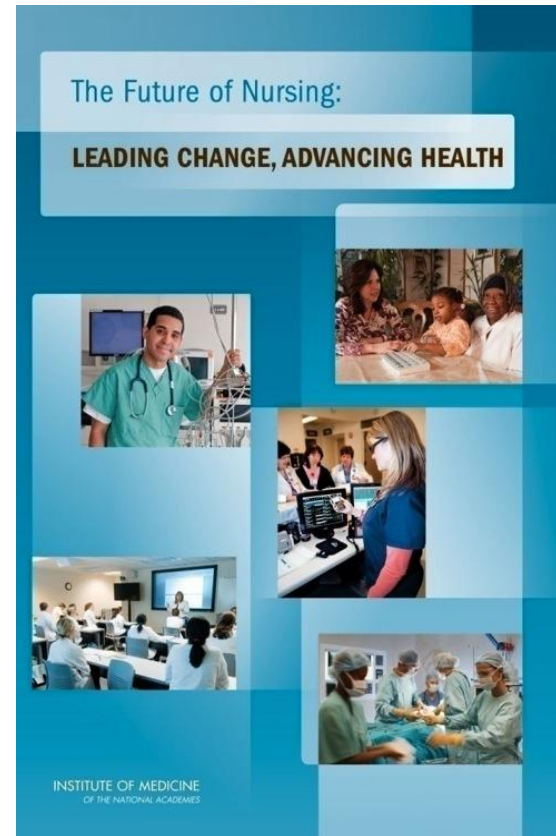
John R. Lumpkin, MD, MPH
Senior Vice President
Robert Wood Johnson Foundation



Robert Wood Johnson Foundation

Institute of Medicine Report

- #1 top selling and most downloaded report and #1 reason why people visit IOM website
- Re-conceptualizes roles for nurses.
- Offers recommendations to transform health through nursing.



FUTURE OF NURSING™

Campaign for Action

AT THE CENTER TO CHAMPION NURSING IN AMERICA



Robert Wood Johnson Foundation



Pennsylvania Action Coalition





Education



**Practice &
Care**



Leadership



Diversity



**Interprofessional
Collaboration**

FUTURE OF NURSING™

Campaign for Action

AT THE CENTER TO CHAMPION NURSING IN AMERICA



Robert Wood Johnson Foundation



campaign progress

Indicator 1: Education

IOM Recommendation:

Increase the proportion of nurses with baccalaureate degree to 80% by 2020

Percentage of employed nurses with baccalaureate degree in nursing or higher degree



- 96% increase in RN-to-BSN
44,262 in 2014
- 30.1% of BSN grads in 2014 represent minority populations (up from 24.1% in 2005).



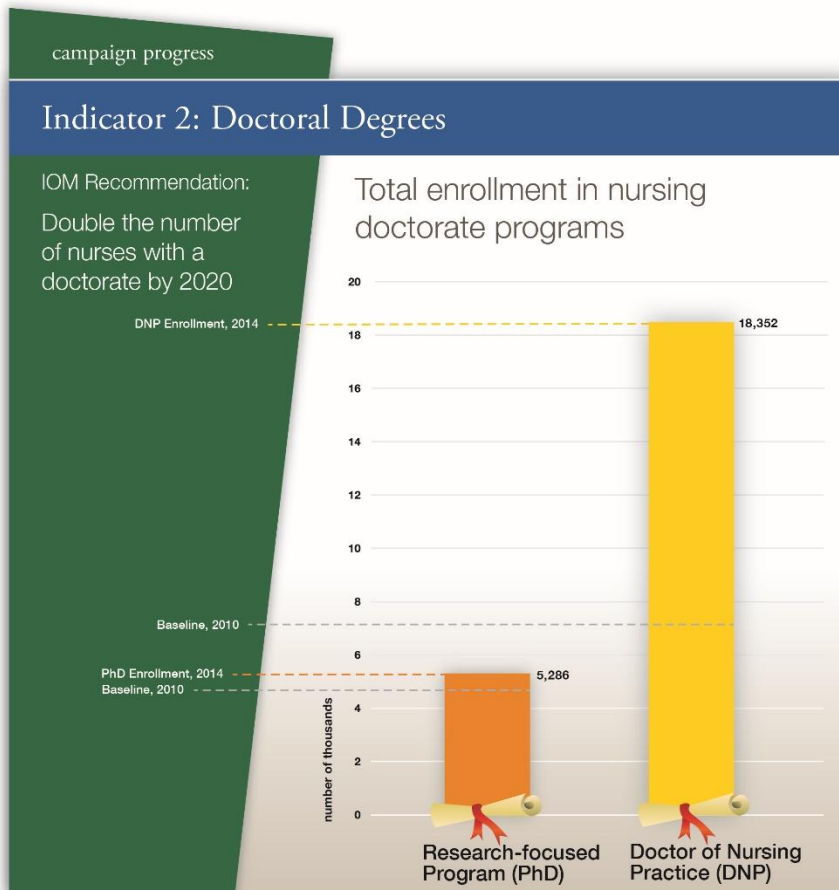
FUTURE OF NURSING™

Campaign for Action

AT THE CENTER TO CHAMPION NURSING IN AMERICA



Robert Wood Johnson Foundation



- DNP enrollment up 160%
18,352 in 2014.
- PhD enrollment up 14.6%
5,286 in 2014.

Data Source: American Association of Colleges of Nursing, *Enrollment & Graduations in Baccalaureate and Graduate Programs in Nursing (series)*



Nurses bring a unique perspective to management and policy discussions.

- Nurses are the largest segment of the health care work force and spend the most time with people receiving health services.
- Nurses are vital to improving quality.
- Yet nurses account for only 2-6 percent of *voting* hospital board positions.



FUTURE OF NURSING™

Campaign for Action

AT THE CENTER TO CHAMPION NURSING IN AMERICA



Robert Wood Johnson Foundation



Nurses on Boards Coalition

- 21 leading organizations.
- Pledge to place 10,000 nurses on boards by 2020.



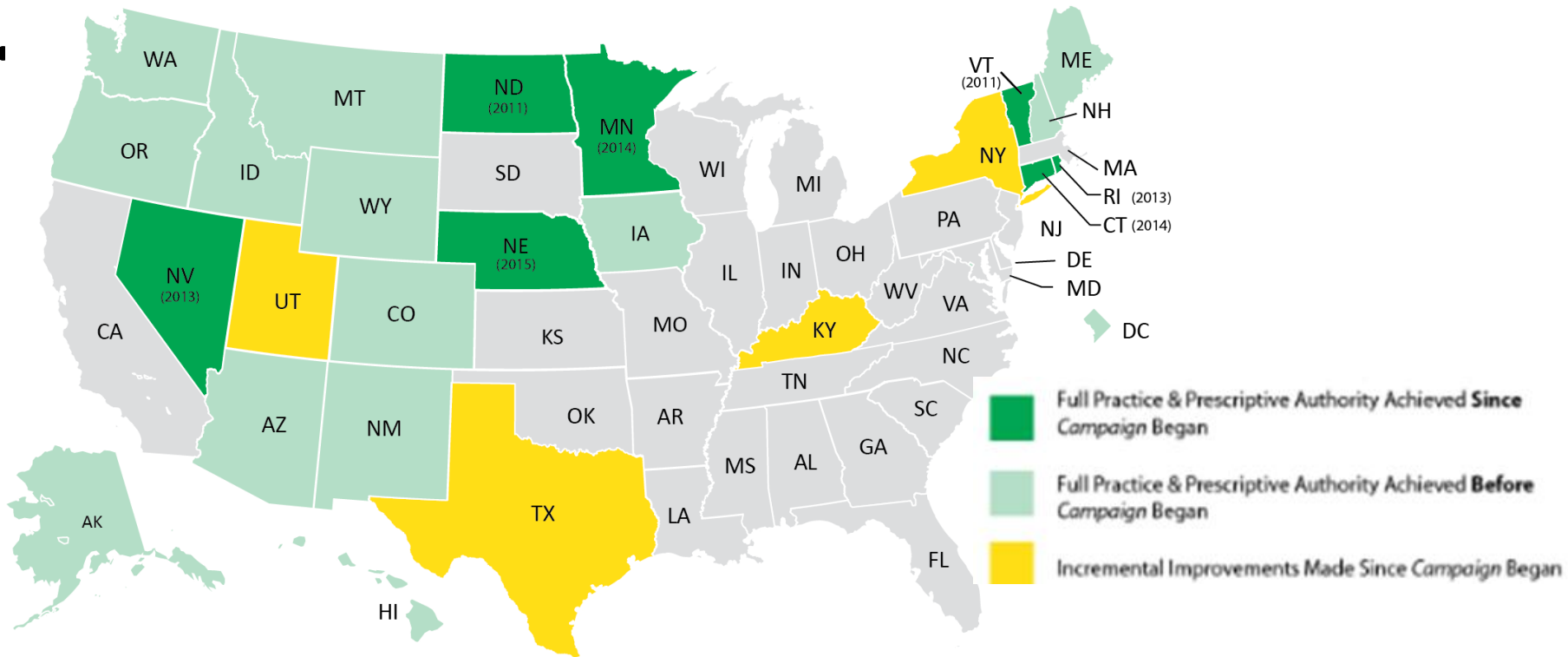
FUTURE OF NURSING™

Campaign for Action

AT THE CENTER TO CHAMPION NURSING IN AMERICA



Robert Wood Johnson Foundation



¹ This map from AANP shows the practice environment for nurse practitioners. For more detail about other types of APRNs, see NCSBN's maps: <https://www.ncsbn.org/2567.htm>.



FUTURE OF NURSING™

Campaign for Action

AT THE CENTER TO CHAMPION NURSING IN AMERICA



Robert Wood Johnson Foundation



There's a reason we're *smiling*...



The Massachusetts Action Coalition

Massachusetts has received national recognition
for its leadership efforts to implement the recommendations
of the Institute of Medicine Report (IOM).



FUTURE OF NURSING™

Campaign for Action

AT THE CENTER TO CHAMPION NURSING IN AMERICA



Robert Wood Johnson Foundation



MASSACHUSETTS
ACTION COALITION
Transforming Healthcare Through Nursing

REPORT



Nursing Faculty Workforce Challenges in Massachusetts



Nurse

AFSCME International

Disabled American Veterans

Association People with Disabilities

HIMSS

Target

Verizon

Kaiser Permanente

LeadingAge

Cancer Society Cancer Action Network

Convenient Care Association

Home Care and Hospice

Hill-Rom

Business Group on Health

Champions

Rural Health Association

NEA

Community Health Centers

Take Care Health Systems AFT

Easter Seals

Hispanic Medical Association

UnitedHealth Group

Consumers Advancing Patient Safety

Business Coalition on Health

Hospice and Palliative Care Organization

Hospital Association

Visiting Nurse Associations of America

AFL-CIO

County and City Health Officials

Leapfrog Group

NASUAD AHIP Partnership for Women and Families

Alliance for Caregiving

Caregiver Action Network

Heart Association Paralyzed Veterans of America

Siemens Healthcare

CIGNA

Johnson and Johnson

Americas Essential Hospitals

Susan G Komen for the Cure

PACE Association

AARP

Catholic Health Geriatrics Society

Health Care Association

Aetna

Families USA

APHA

March of Dimes

FUTURE OF NURSING™

Campaign for Action



Robert Wood Johnson Foundation



FUTURE OF NURSING™

Campaign for Action

AT THE CENTER TO CHAMPION NURSING IN AMERICA



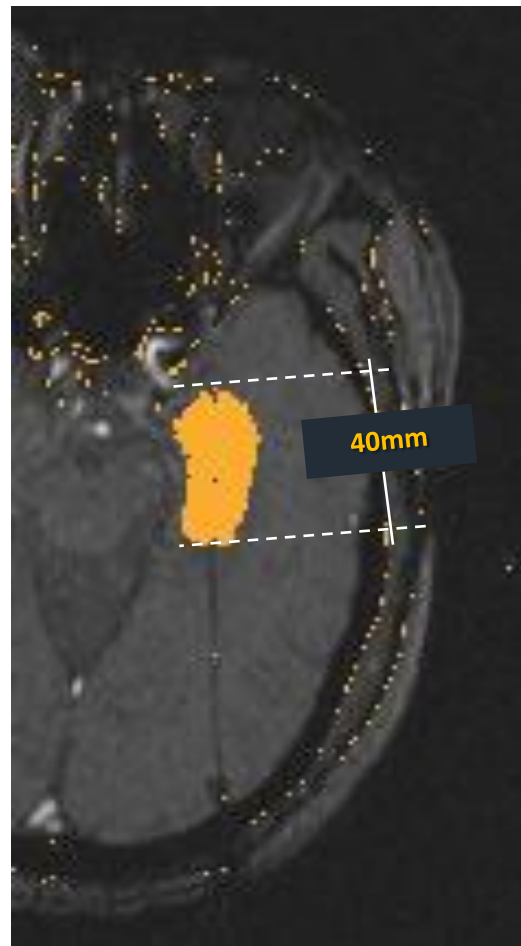
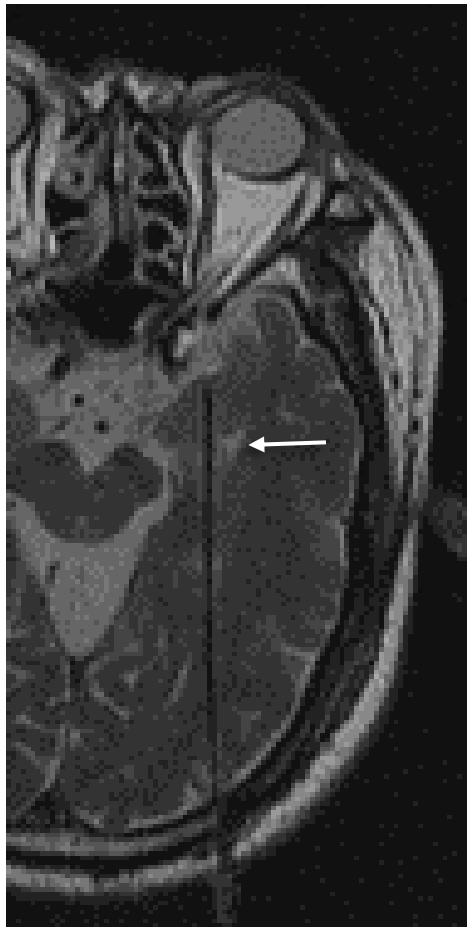
Robert Wood Johnson Foundation



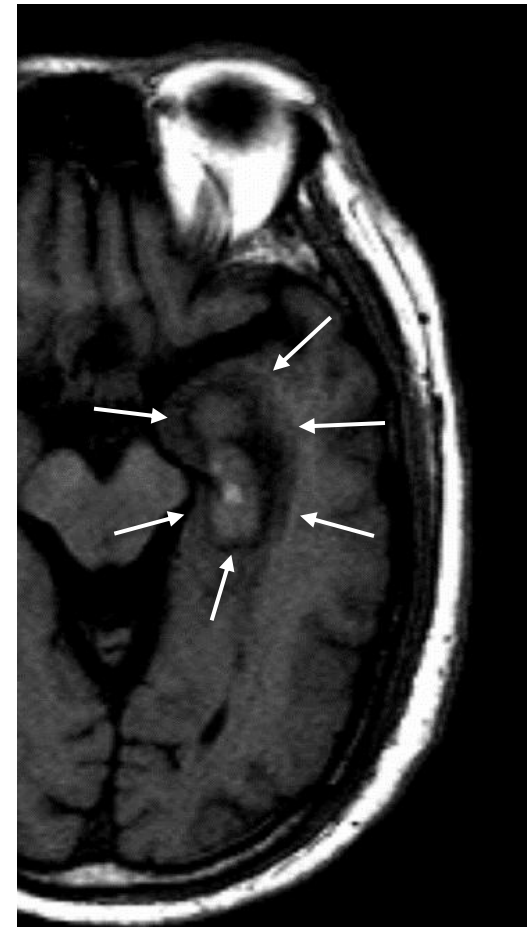
Everyone in America can live a healthier life, supported by a system in which nurses are essential partners in providing care and promoting health



MRI-guided Laser Ablation for Intracranial Pathologies



Combined Irreversible Damage
Estimate **40mm by 18mm**



24 Hr Post-ablation T1



Mary Beth Dwyer, RN examines her 3-D printed part at Bon Secours Hospital Expedition Site

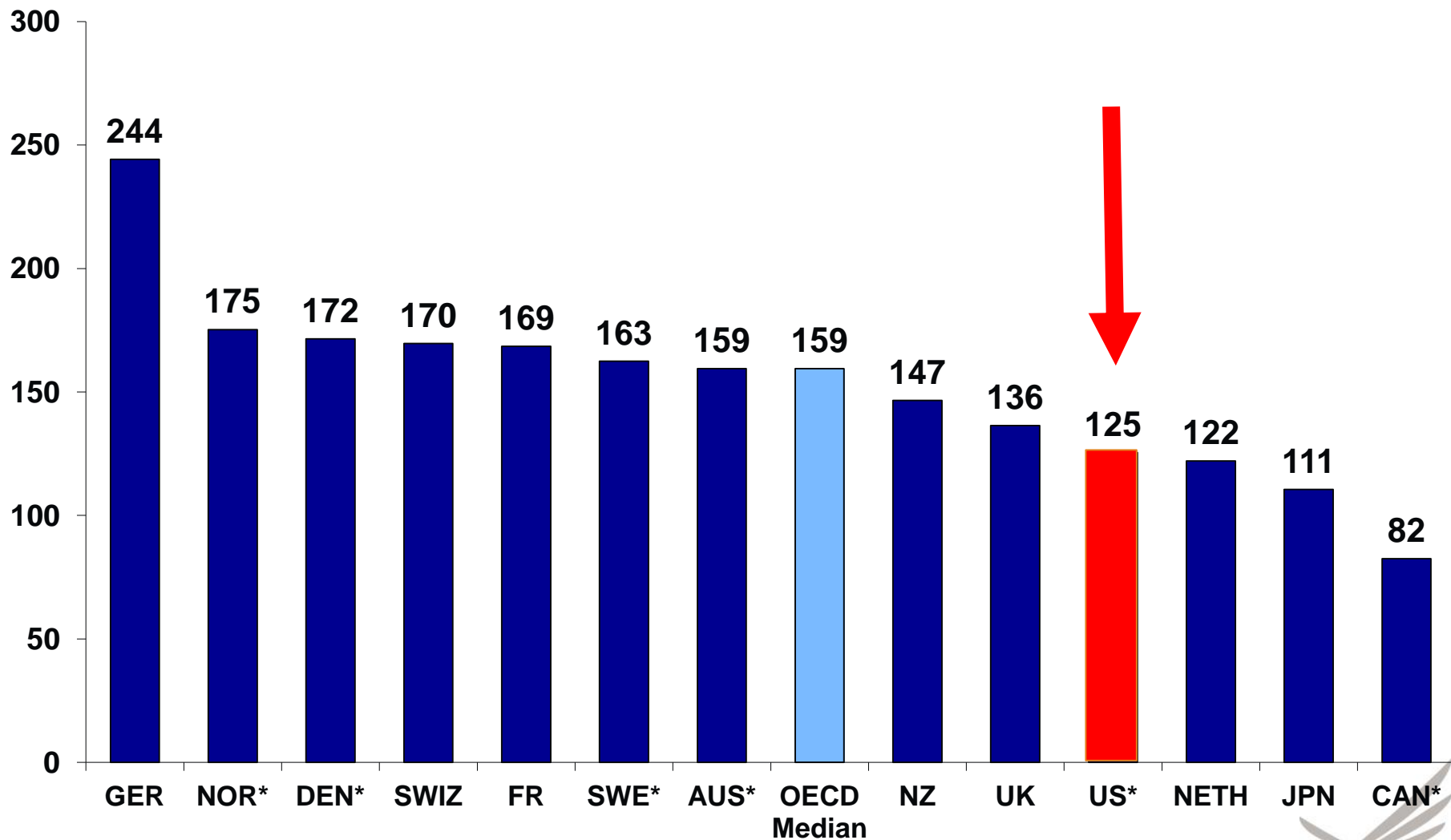
Chip Embedded Medications



**We have the best clinical
science in the world...**

Hospital Discharges

per 1,000 Population, 2011



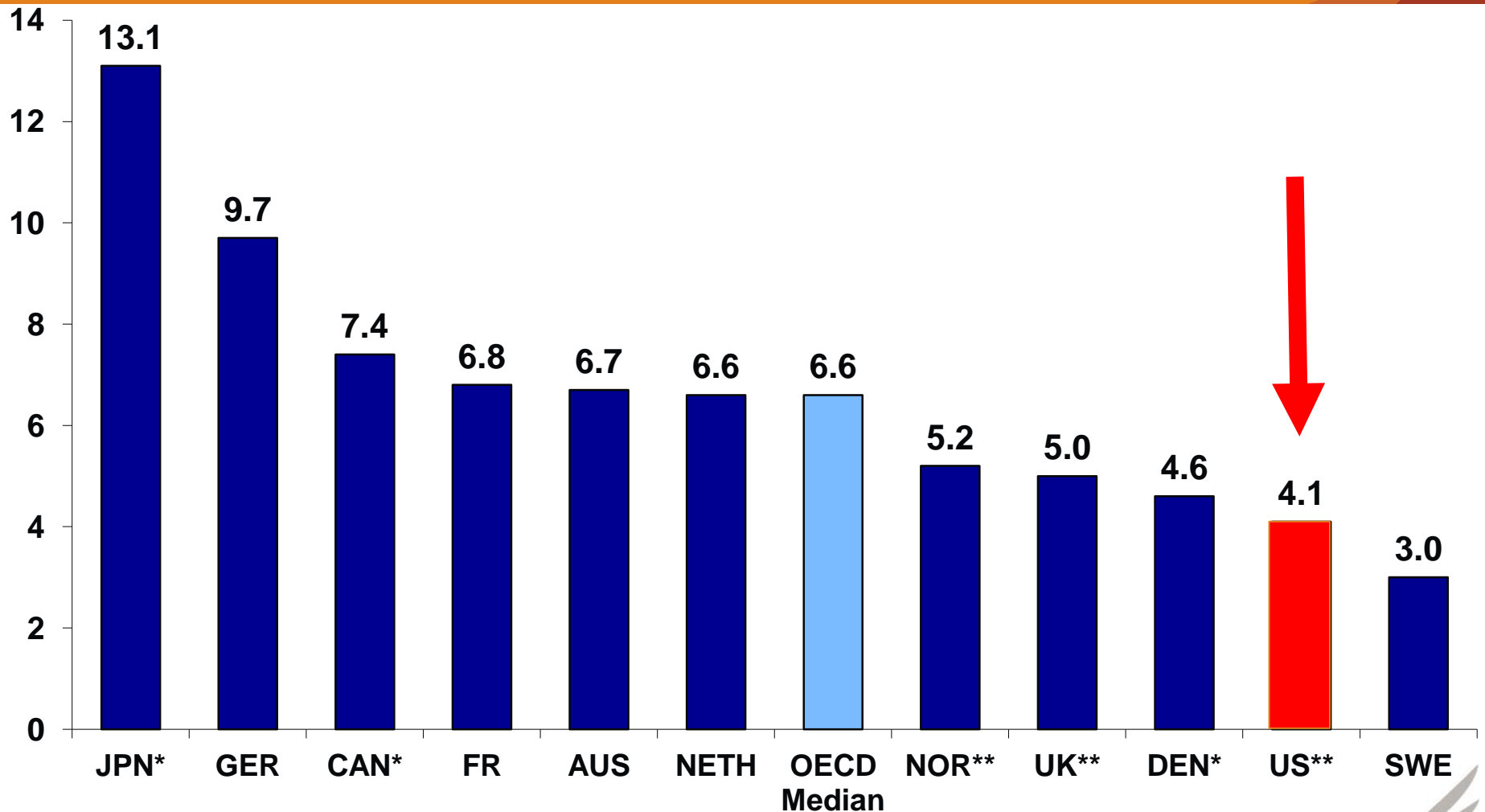
* 2010.

Source: Commonwealth Fund from OECD Health Data

2012



Average Annual Physician Visits per Capita, 2011



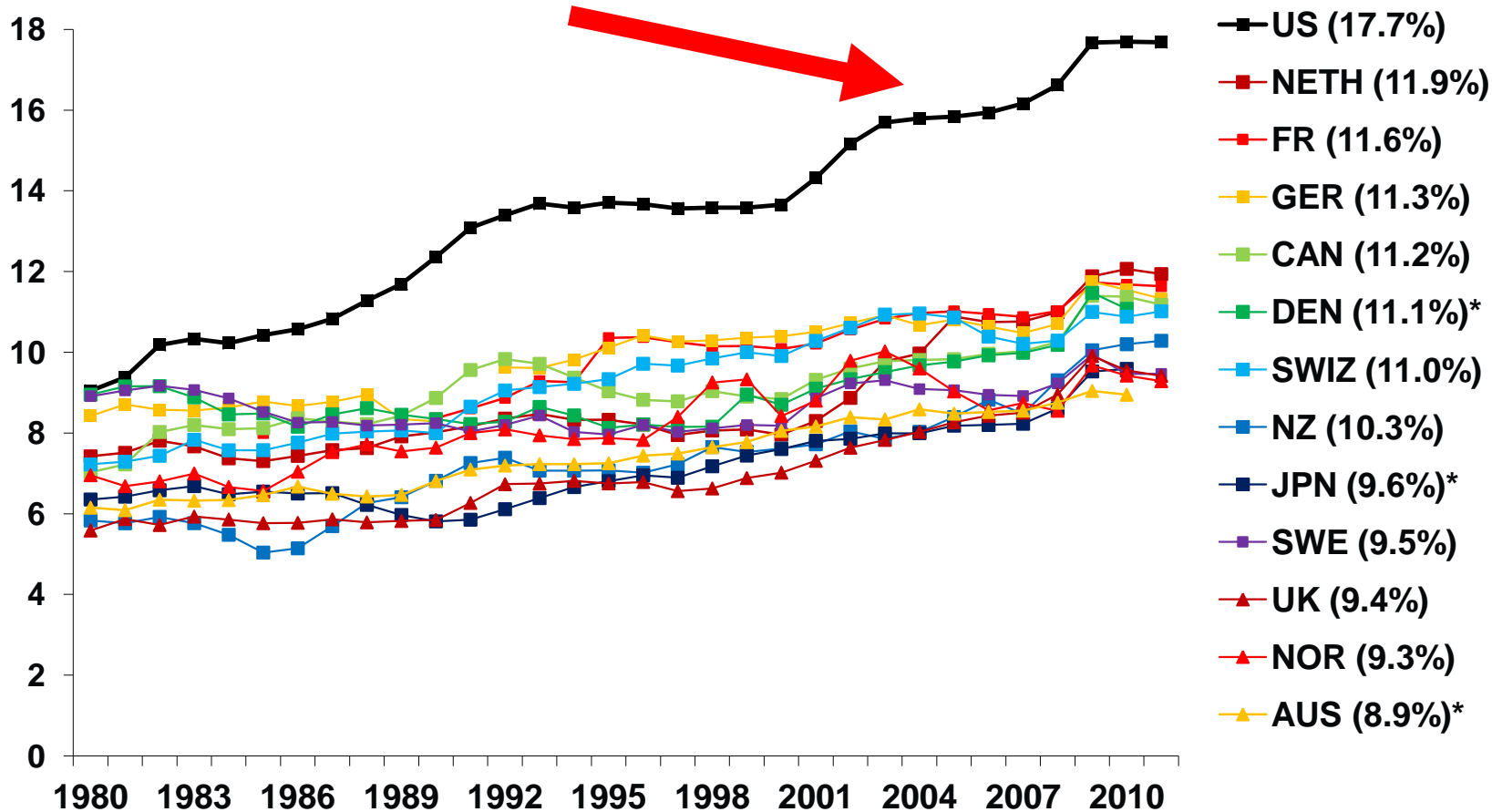
* 2010.

** 2009.

Source: Commonwealth Fund from OECD Health Data 2013.

Health Care Spending 1980–2011

Percent



Source: OECD Health Data 2013.

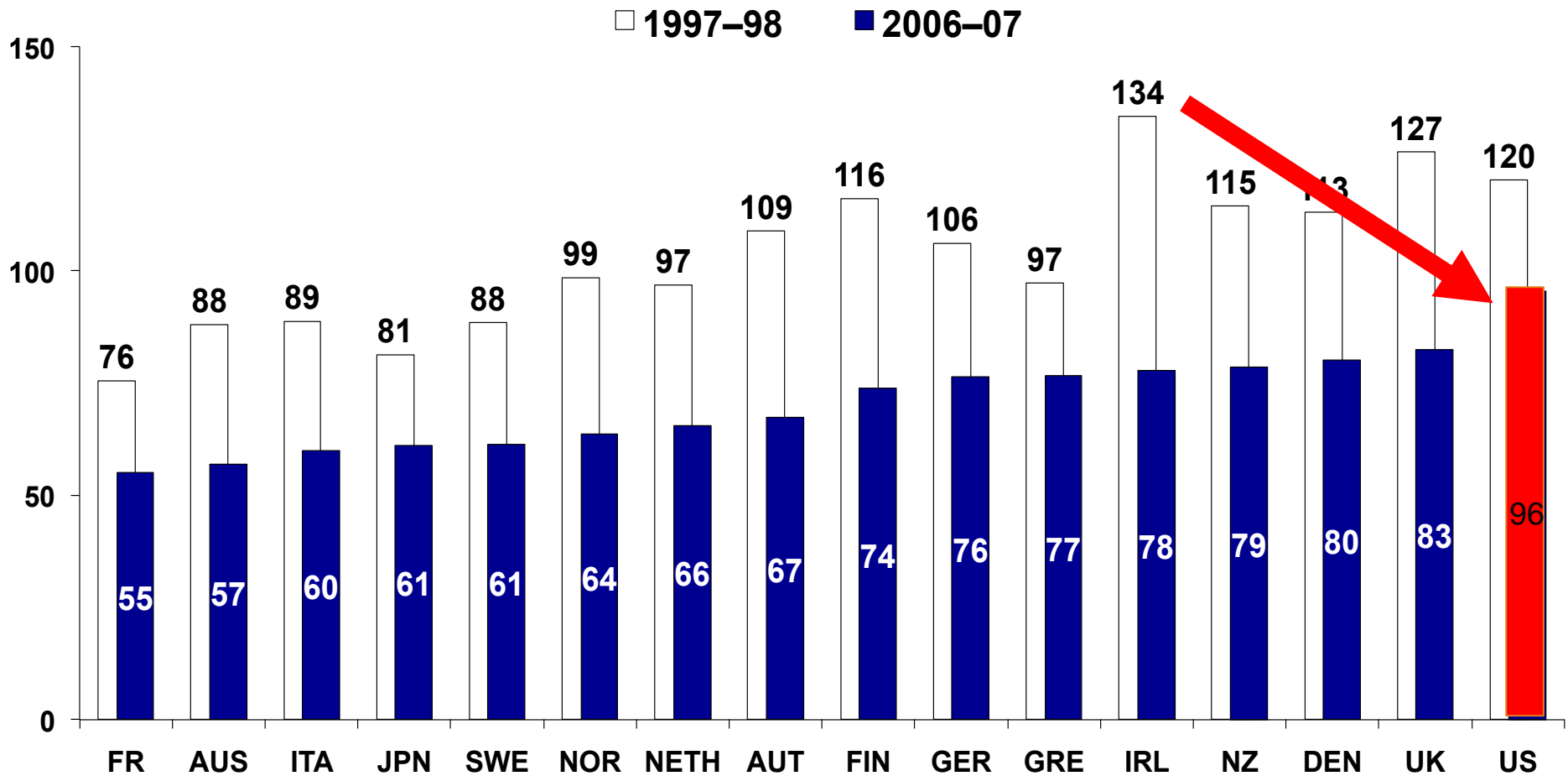


**We have the best clinical
science in the world...**

**Do we have the best health
care in the world?**

Mortality Amenable to Health Care

Deaths per 100,000 population*

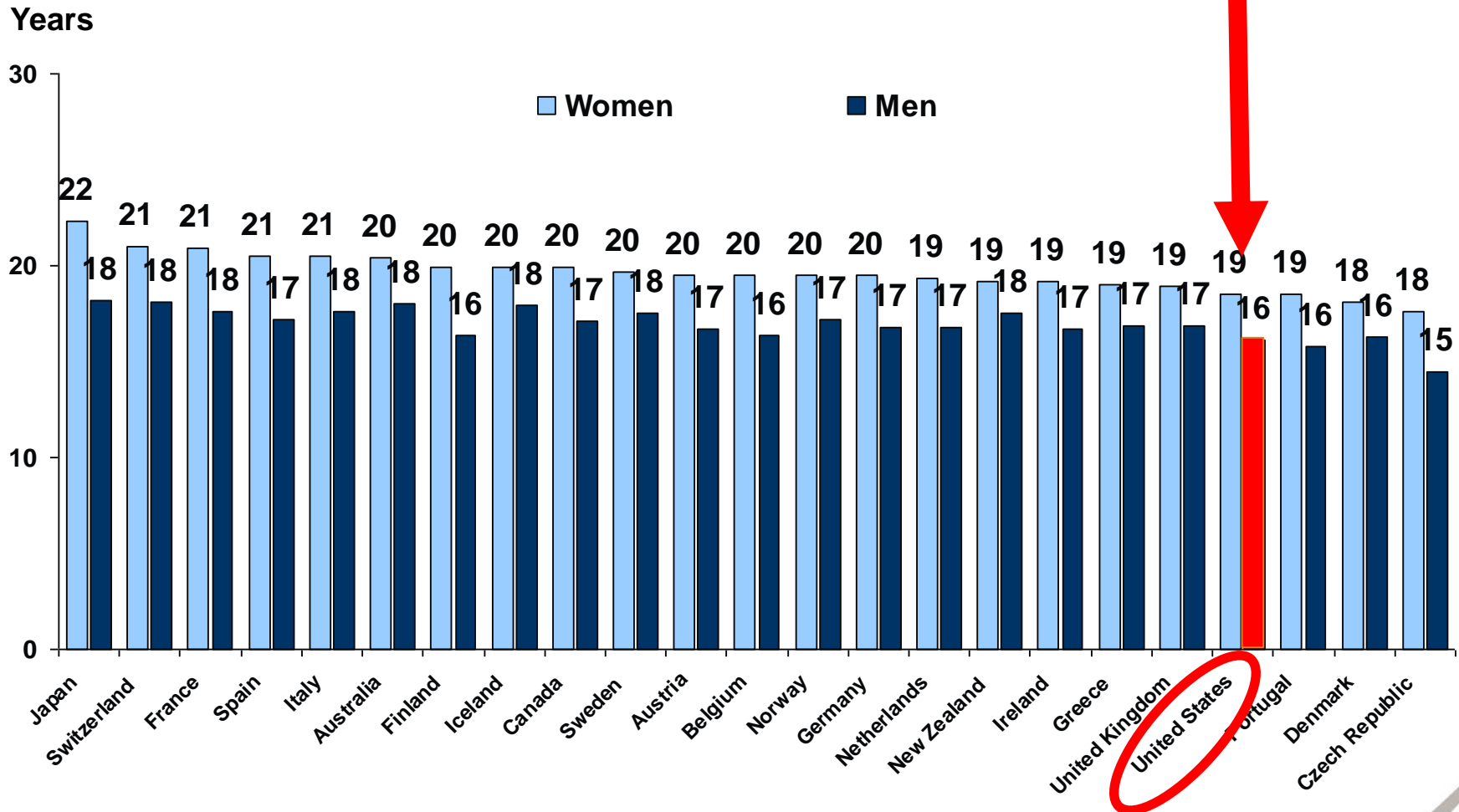


Source: Adapted from E. Nolte and M. McKee, "Variations in Amenable Mortality—Trends in 16 High-Income Nations," *Health Policy*, published online Sept. 12, 2011.

**We have the best clinical
science in the world...**

**Do we have the best health
in the world?**

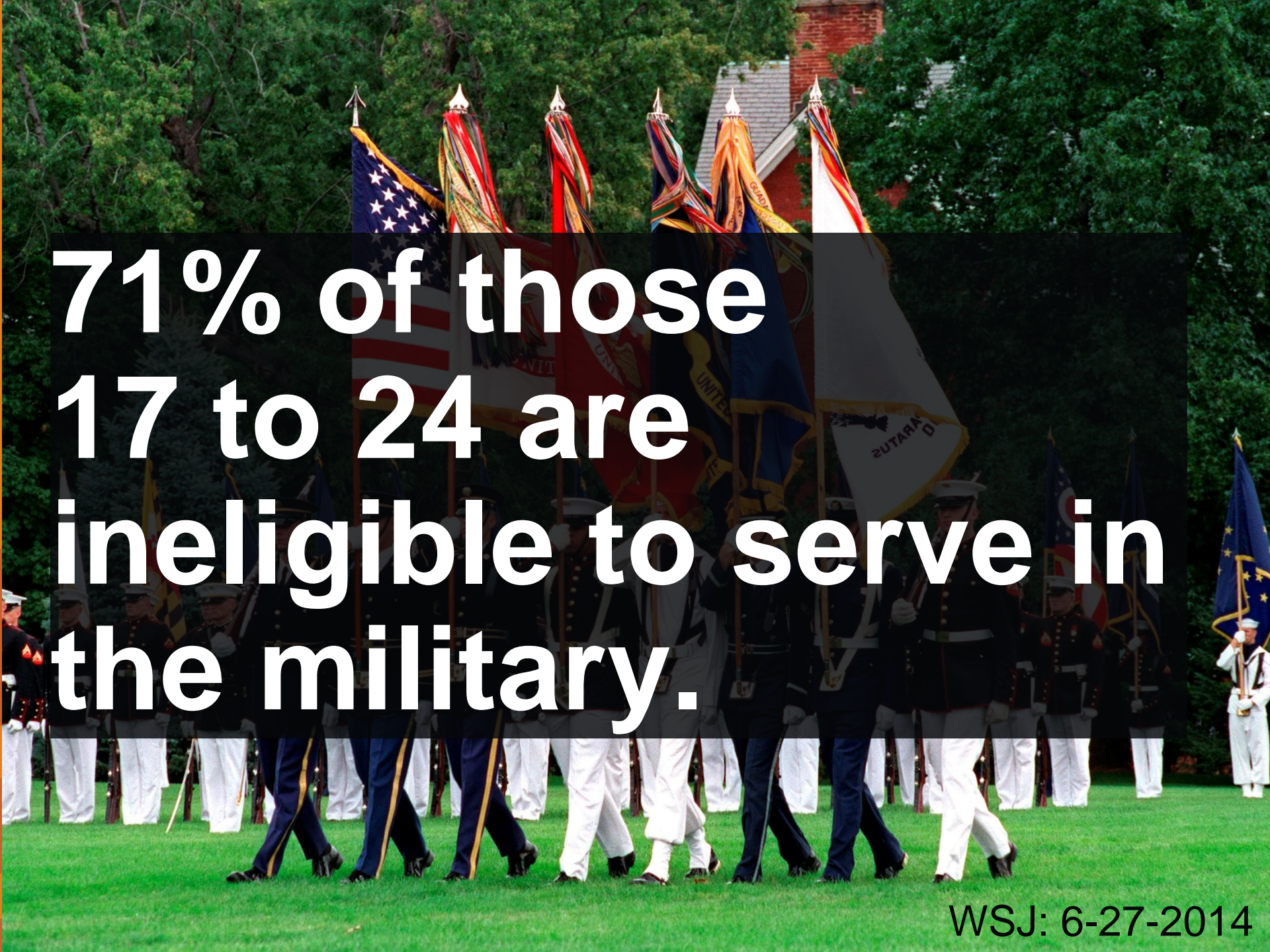
Healthy Life Expectancy at Age 60, 2007



Data: Provided by C. Mathers. Unpublished data set consistent with HALE estimates published in *World Health Statistics 2009* (Geneva: World Health Organization).



Source: Commonwealth Fund National Scorecard on U.S. Health System Performance, 2011.

A marching band in uniform is performing on a green lawn. They are carrying several flags, including the United States flag and various state flags. The band members are wearing dark jackets and white pants. The background shows a brick building and trees.

**71% of those
17 to 24 are
ineligible to serve in
the military.**

Overall Health Status US

Persons Aged 46-64

NHANES 1988-1994

2007-2010

Report “excellent” health

32%

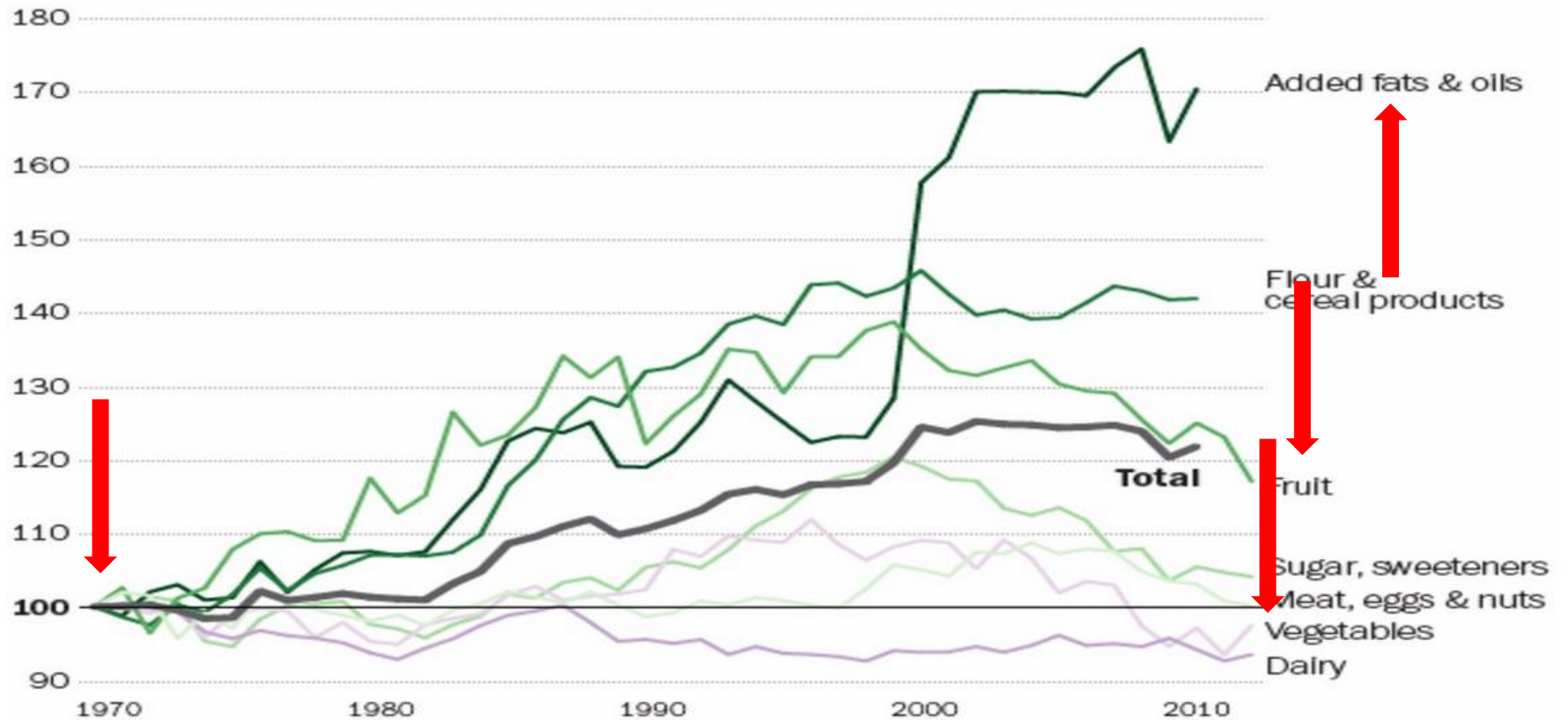
No regular physical activity

17%



The rise of oils, fats and grains

percent change in average daily per-capita calories (1970 value = 100)



**Every System is
perfectly designed
to get the results it gets**

- Don Berwick

Culture

Learned and shared behavior of a community of interacting human beings

– Useem & Useem: Human Organizations 1963

We, as a nation, will strive together to build a culture of health enabling all in our diverse society to lead healthy lives, now and for generations to come



**what is a
culture
of health?**

**what is a
culture
of health?**

Being healthy
and staying
healthy is an
**esteemed
social value**



health of the population guides public and private decision-making





geography and demographics
do not serve as barriers to good health.





individuals,
businesses and
governments
work collectively
to foster healthy
communities and
lifestyles.

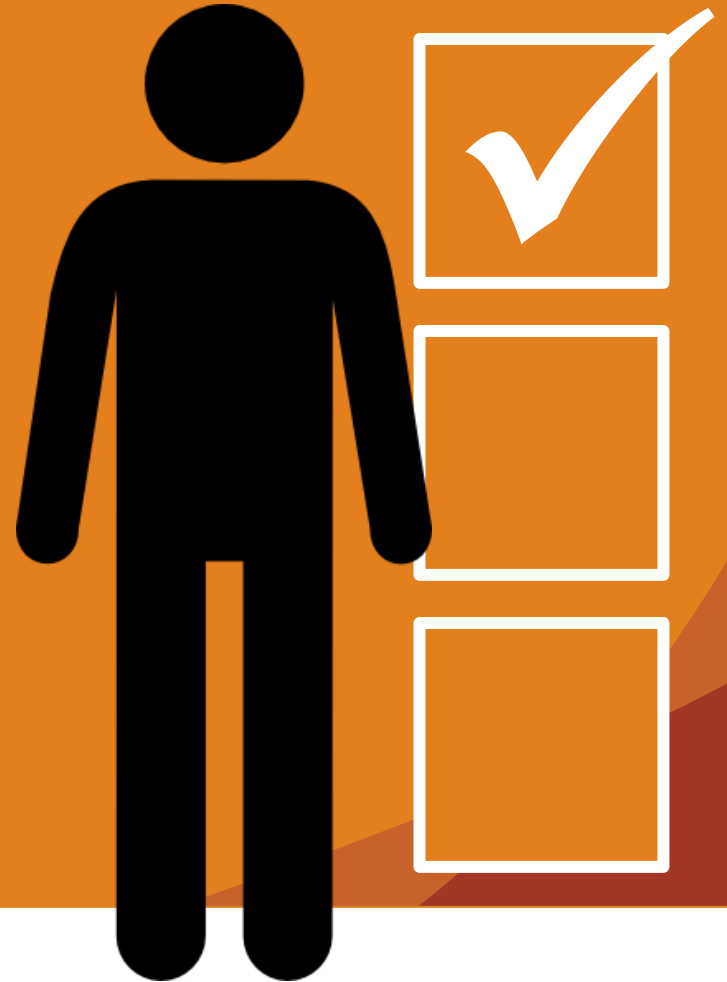




Individuals,
 businesses and
 governments
 the economy is less burdened by
excessive and unwarranted
work collectively
 health care spending
 to foster healthy
 communities and
 lifestyles.



we are all
supported to make
proactive choices
that will improve
our health.



☰ SECTIONS

🔍 SEARCH

THE BALTIMORE SUN

MONDAY SEP. 21, 2015

[BREAKING](#) [SPORTS](#) [MARYLAND](#) [RAVENS](#) [OPINION](#) [MOST VIEWED](#) [OBITS](#) [ADVERTISING](#)

Number of uninsured in Maryland, nation declines

By Meredith Cohn

Action Coalitions Building a Culture of Health: Arizona, *ACA Enrollment Outreach*



Introducing **CVS Health** Health is everything.

CVS Health
Health is everything.

It's your #OneGoodReason to live tobacco free?

Cigarettes Out. Health In.

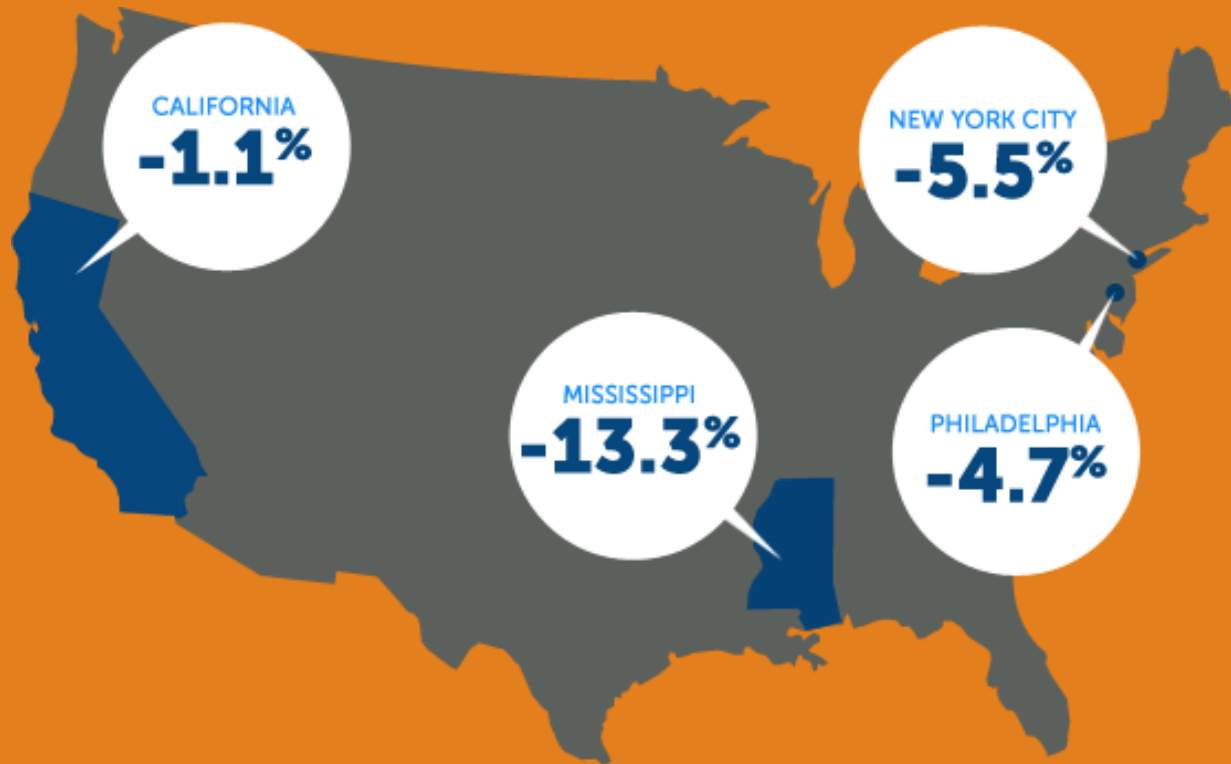
Cigarettes Out. Health In.

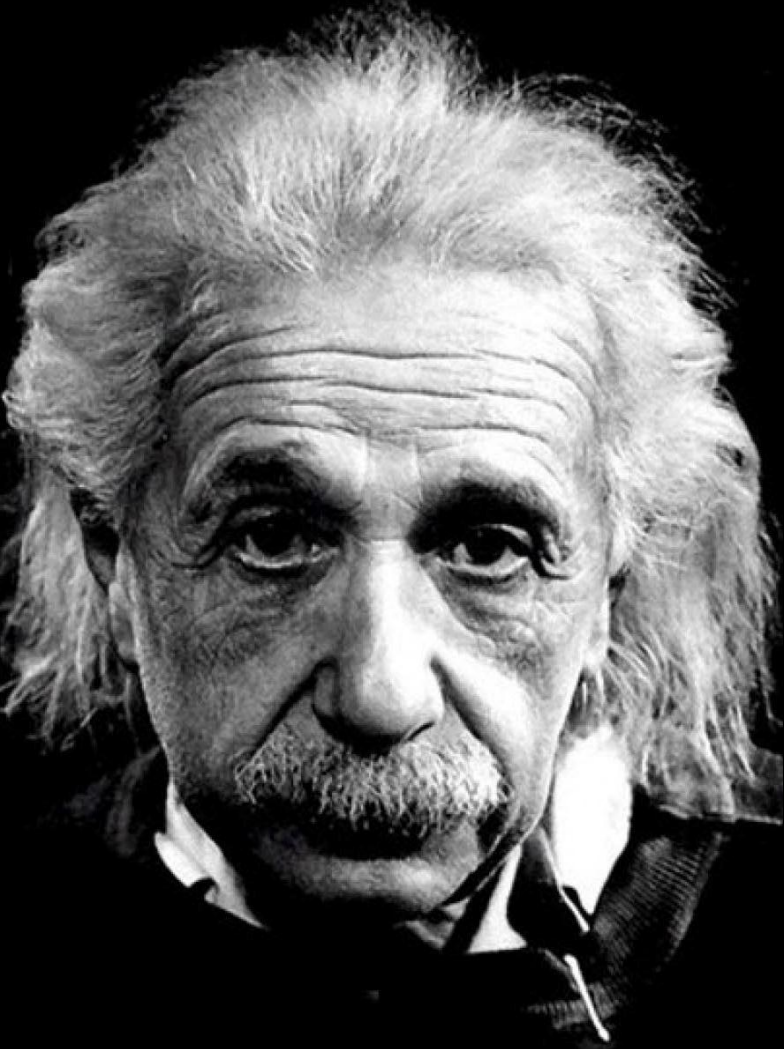
We've officially quit selling tobacco in all CVS/pharmacy® stores.

Start with your #OneGoodReason to live tobacco free.



Childhood Obesity: Signs of Progress

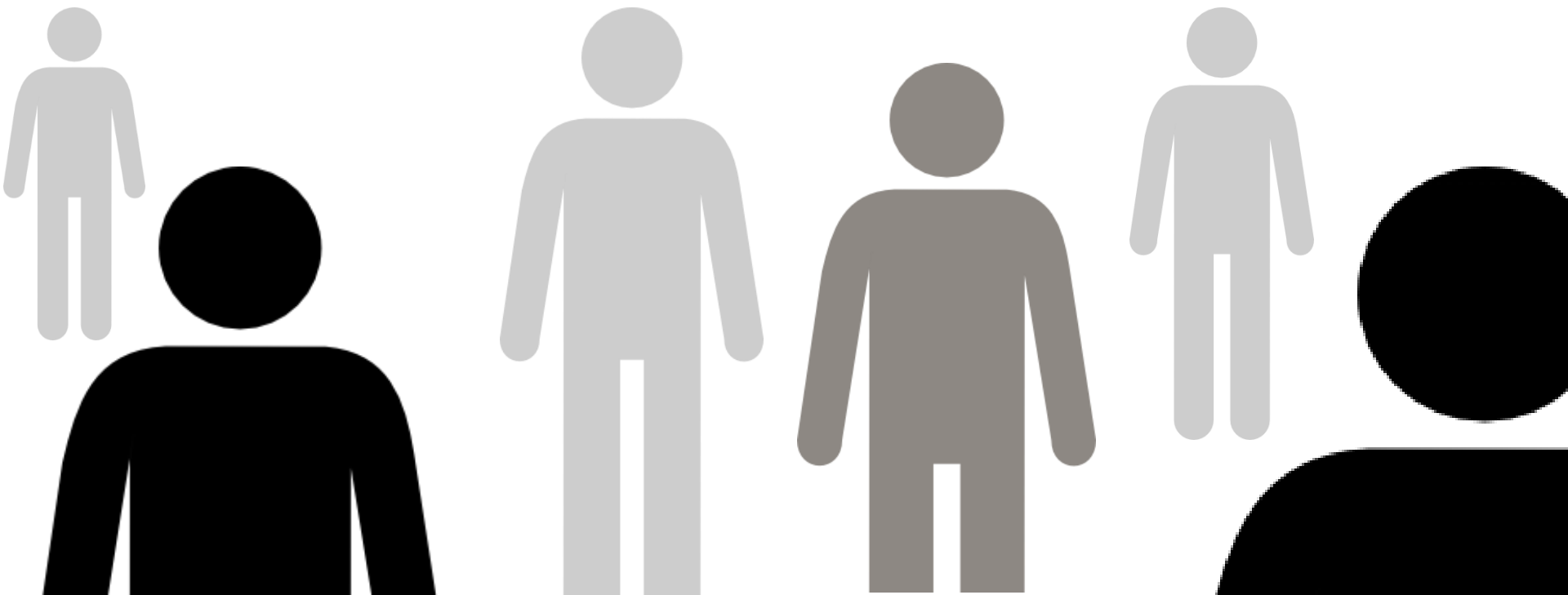




Microsoft
Windows

We can't solve problems
by using the same kind
of thinking we used
when we created them.

we will only be able to succeed if we take
chances and consider completely
new approaches and ways of thinking





This is how CHAD looks in September.



This is how Ret looks in September.

Math
K Assessment

Date: September



I can write my name:

CEA BOY

I can count to: 5

I can write my numbers 0 through 20:

0 1 2 3 4 5 6 7 8 9 10 11 12 13 14 15 16 17 18 19 20

Math
K Assessment

Date: September



I can write my name:

JOZE

I can count to: 20

I can write my numbers 0 through 20:

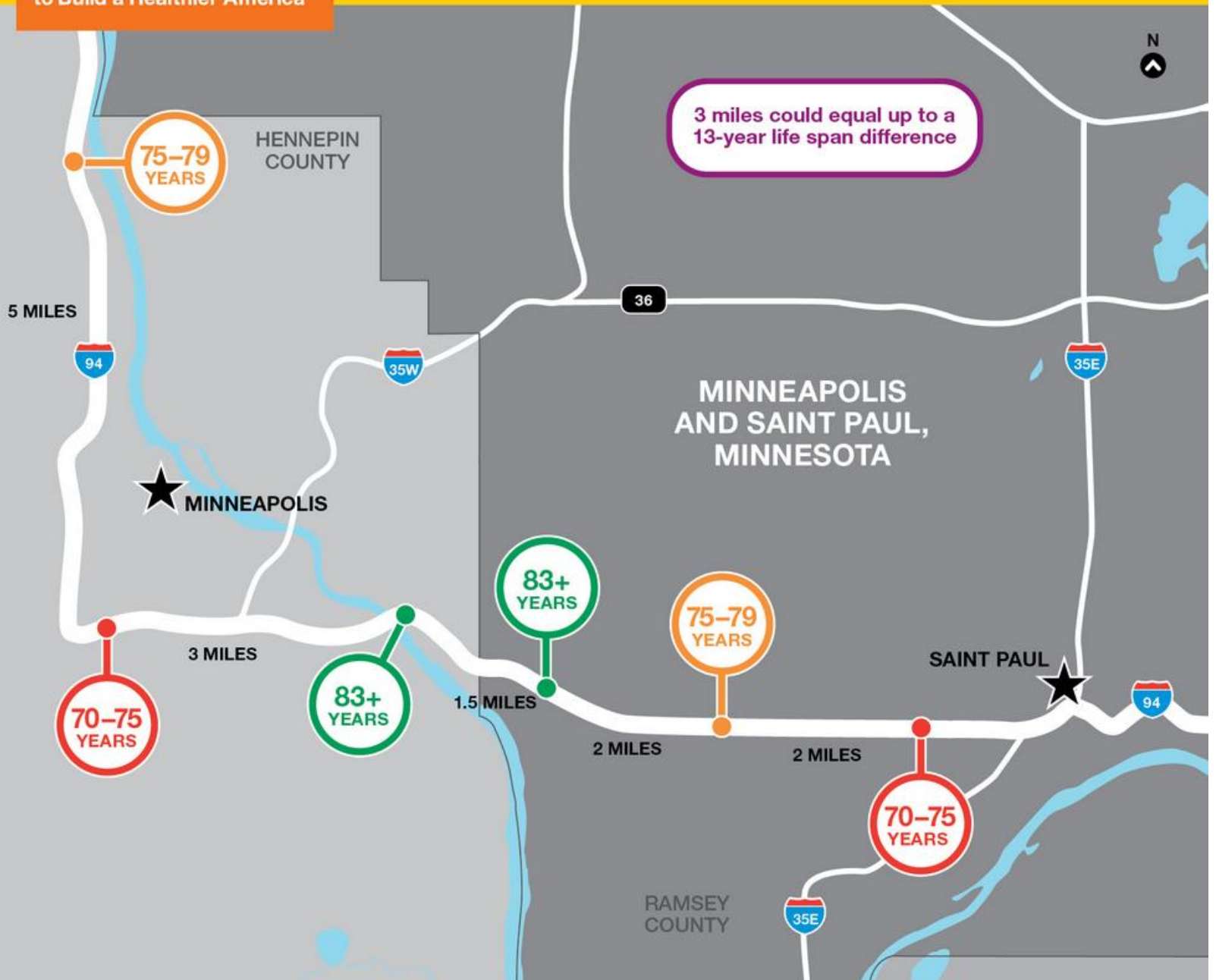
0 1 2 3 4 5
6 7 8 9 10 11
12 13 14 15 16 17
18 19 20



Center on Society and Health



Education: It Matters More to Health than Ever Before



Health Disadvantage Affects All

- **Non-Hispanic Whites with health insurance, high incomes and college education**
 - Higher infant mortality
 - Higher rates of chronic disease
 - Lower life expectancy

CULTURE OF HEALTH ACTION FRAMEWORK





ACTION AREA



MAKING HEALTH A SHARED VALUE

DRIVERS

MINDSET AND
EXPECTATIONS

SENSE OF
COMMUNITY

CIVIC
ENGAGEMENT



Brownsville Texas



Brownsville Texas

- Poverty
- Heart disease
- Diabetes
- Stroke



BROWNSVILLE
RWJF Culture of Health Prize







ACTION AREA



FOSTERING CROSS-SECTOR COLLABORATION TO IMPROVE WELL-BEING

DRIVERS

NUMBER
AND QUALITY
OF PARTNERSHIPS

INVESTMENT IN
CROSS-SECTOR
COLLABORATION

POLICIES
THAT SUPPORT
COLLABORATION



INVESTING IN
**WHAT
WORKS**
FOR AMERICA'S
COMMUNITIES

ESSAYS ON PEOPLE, PLACE & PURPOSE

FEDERAL RESERVE BANK OF SAN FRANCISCO
& LOW INCOME INVESTMENT FUND

Why Health, Poverty, and Community Development Are Inseparable

by Risa Lavizzo-Mourey

Share 6

health, integration, measurement



Assessing Health Effects of Community Development

by Nancy E. Adler

Share 0

health, measurement



Early Childhood Development: Creating Healthy Communities with Greater Efficiency and Effectiveness

by Gabriella Conti and James J. Heckman

Share 0

children, education, measurement, policy



Collective Action for Community Development



Volume 5, Issue 3, 2009

Community Development
INVESTMENT REVIEW
www.frbet.org/cdiinvestments

Articles

The Importance of Community Development for Health and Well-Being
*S. Leonard Syme and Miranda L. Ritterman
School of Public Health, University of California, Berkeley*

Prescription for Healthy Communities: Community Development Finance
Lisa Richter, GPS Capital Partners, LLC

Coming Out as a Human Capitalist
*Community Development
Nancy O. Anderson*

Community Health
Scott Sportsman

Building Healthy Communities
Judith Bell

The Disability as the American Dream
Charles D. Johnson and Sam...

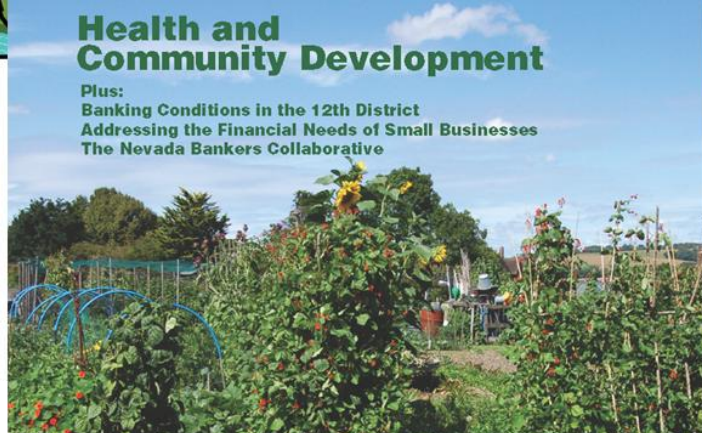
FEDERAL RESERVE BANK OF SAN FRANCISCO

HEALTHY COMMUNITIES: A Framework for Meeting CRA Obligations



Health and Community Development

Plus:
Banking Conditions in the 12th District
Addressing the Financial Needs of Small Businesses
The Nevada Bankers Collaborative



March 2014



By Elizabeth Sobel Blum
Federal Reserve Bank of Dallas



Connecting Housing and Health Care through Community Development

By Kevin Boes, Local Initiatives Support Corporation

When we look at the many needs of low-income communities across the country, it's easy to get stuck in silos—housing or schools, economic development or social services, safer streets or healthier residents. It's more difficult to find ways to address these myriad interrelated needs.

The silos are certainly apparent when it comes to health care and affordable housing. Though there are programs dedicated to building and operating both health care facilities and affordable homes, they do not generally connect to each other, even though we have long known that poor housing and poor health are related. What if we could find a way to truly integrate the two?

That question was the genesis of the Healthy Futures Fund (HFF), a new investment vehicle developed by the Local Initiatives Support Corporation (LISC) in partnership with Morgan Stanley and the Kresge Foundation. HFF is a fund that brings together grant, loan and equity capital to build affordable housing and community health centers as well as fund services that link them in places where one of the two already exist.

The three founding partners have seeded the new fund with \$100 million in initial capital. That funding will support development of 500 housing units with integrated health services and eight Federally Qualified Health Centers (FQHCs) that will serve an estimated 75,000 people. The fund is designed to spur collaboration between health care providers and housing developers who do not often work together, even when they operate in the same low-income neighborhoods and serve the same people. In short...

Special Focus: The New Era of Affordable Housing

Action Coalitions Building a Culture of Health: DC Public Library Project

- Provide health education and prevention
- Help with health literacy
- Assess for other social determinant needs





ACTION AREA



CREATING HEALTHIER, MORE EQUITABLE COMMUNITIES

DRIVERS

BUILT ENVIRONMENT/
PHYSICAL CONDITIONS

SOCIAL AND ECONOMIC
ENVIRONMENT

POLICY AND
GOVERNANCE



2 missing New Brunswick boys found dead in Raritan River



RWT FITNESS & WELLNESS

the fresh grocer

RUTGERS
Center for
the Study of
Human Services

Welcome to New Brunswick
the healthcare city

NO
PARKING
ANY
TIME







ACTION AREA



STRENGTHENING INTEGRATION OF HEALTH SERVICES AND SYSTEMS

DRIVERS

ACCESS

CONSUMER EXPERIENCE
AND QUALITY

BALANCE AND
INTEGRATION



Healthcare Cost Hotspots in Camden, NJ (Jan 2002-June 2008)



High Cost Buildings...



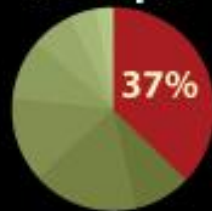
Northgate II
3,901 visits, 615 patients
\$83 million in charges
(\$21,000 per visit)
\$12 million in receipts
15% collection rate



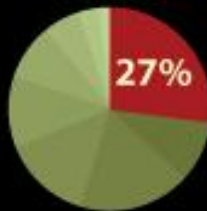
Abigail House
1,414 visits, 332 patients
\$92 million in charges
(\$65,000 per visit)
\$15 million in receipts
16% collection rate

Overview of High Cost Hotspots...

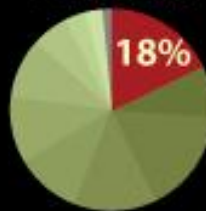
Receipts



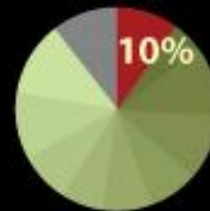
Visits



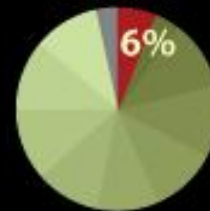
Patients



Area



Blocks



Map includes only blocks with at least 1 visit

Change what you know. Know what to change.

CamConnect.org



**Camden Coalition of
Healthcare Providers**

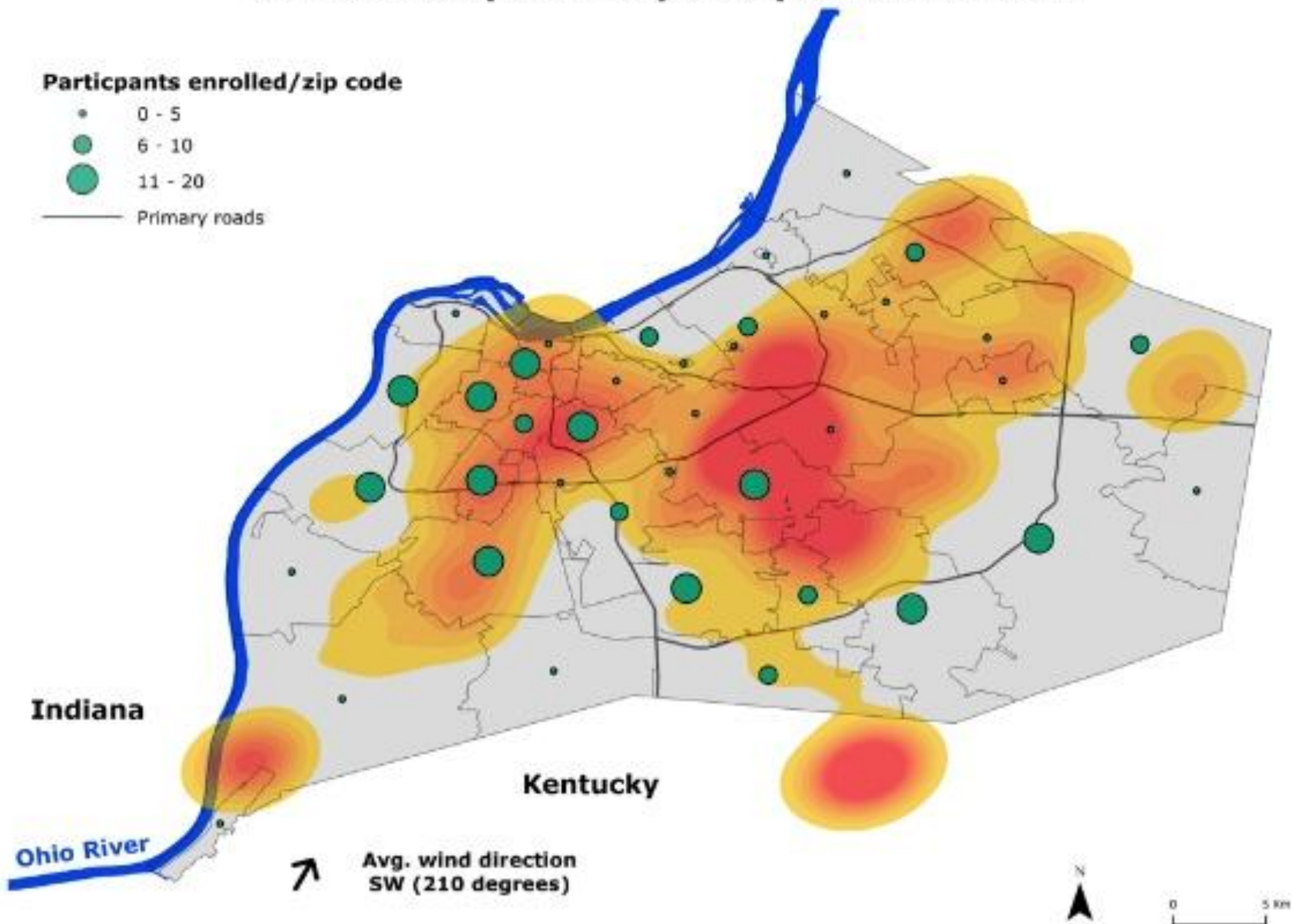
www.camdenhealth.org

Source: Cooper, Lourdes, and Virtua
Hospital and ER billing data
Jan 2002-June 2008

PROPELLER 



Asthma hotspots and participant enrollment





IMPROVED POPULATION HEALTH, WELL-BEING, AND EQUITY

OUTCOME AREAS

ENHANCED INDIVIDUAL
AND COMMUNITY
WELL-BEING

MANAGED CHRONIC
DISEASE AND REDUCED
TOXIC STRESS

REDUCED
HEALTH CARE COSTS



Strengthening the Approach to Culture of Health

- Need to make the link more explicit in nursing programs between general education, including economics, politics, social sciences, and basic sciences and nursing in building a Culture of Health.
- Explicitly imbed Culture of Health into all levels of curriculum.
- Provide examples of nurse role models whose practice helps build a Culture of Health.



Develop Partnerships

- **Partner with diverse organizations and groups to make health a priority.**
- **Be open to all partners:**
 - ✓ Consumers
 - ✓ Business partners
 - ✓ Health professionals
 - ✓ entrepreneurs



Florence Nightingale on Health

“Money would be better spent in maintaining health in infancy and childhood than in building hospitals to alleviate disease. It is much cheaper to promote health than to maintain people in sickness”

--Florence Nightingale, 1894



**Health is
more than
Health Care**

Patient time

Activity	Minutes	
Clinical visit	60	0.01%

Patient time

Activity	Minutes	
Clinical visit	60	0.01%
Watching TV	93,600	18%

Patient time

Activity	Minutes	
Clinical visit	60	0.01%
Watching TV	93,600	18%
Working	120,000	23%

Patient time

Activity	Minutes	
Clinical visit	60	0.01%
Watching TV	93,600	18%
Working	120,000	23%
Eating and drinking	27,360	5%

Patient time

Activity	Minutes	
Clinical visit	60	0.01%
Watching TV	93,600	18%
Working	120,000	23%
Eating and drinking	27,360	5%
Shopping	15,770	3%

Patient time

Activity	Minutes	
Clinical visit	60	0.01%
Watching TV	93,600	18%
Working	120,000	23%
Eating and drinking	27,360	5%
Shopping	15,770	3%
Sports and exercise	7,008	1.3%



Health happens where we live, learn, work, and play







Inhalers



AIRWAYS

Adult Airway

Child Airway

EPI PENS

Diastat

erios

Ziploc

SAM SPLINT

SPLINTS





We, as a nation, will ~~strive~~ together to build a culture of health enabling all in our diverse society to lead healthy lives, now and for generations to come



