

# Emerging Model

Nelda Godfrey, University of Kansas  
[ngodfrey@kumc.edu](mailto:ngodfrey@kumc.edu)

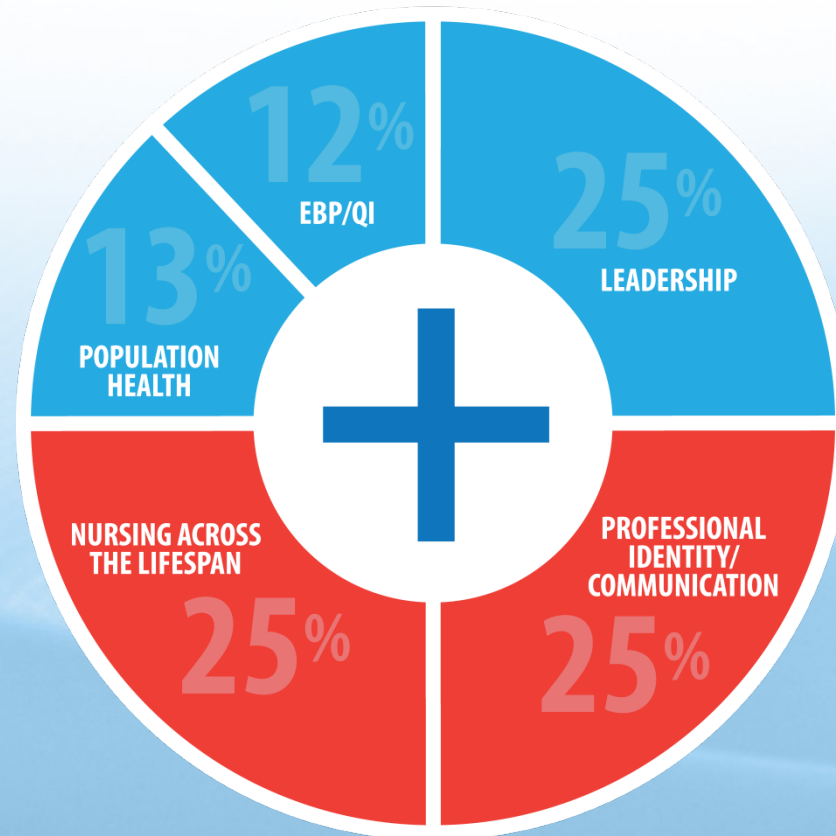
Anita Mills, Butler Community College  
[amills@butlercc.edu](mailto:amills@butlercc.edu)



©2014. The University of Kansas.

Kumm, S. & Fletcher, K.A. (2012). From Daunting Task to New Beginnings: Bachelor of Science in Nursing Curriculum Revision using the New Essentials. *Journal of Professional Nursing*, 28 (2): 82-89.

# BSN EDUCATION



# ADN EDUCATION

©2014.The University of Kansas.

Kumm, S., Godfrey, N., Martin, D., Tucci, M., Muenks, M. & Spaeth, T. (2014). Baccalaureate outcomes met by associate degree programs. *Nurse Educator*, 39 (5), 216-220.